

CAPITOL
THEATRE  YAKIMA

RED & CAROLYN
RAMSEY

Wray's
MARKET
YAKIMA'S FOOD STORES *fresh*

N
noel



SHREK

THE MUSICAL

FALL IN LOVE ALL OGRE AGAIN!

 **Best**
CAPITOL THEATRE

WHEEL LINE
Cider



Blaine & Preciosa
Tamaki Foundation



Heritage
BANK



Gesa
Credit
Union





CAPITOL THEATRE SUPPORT TEAM

Meghan Darragh – Administrative Assistant

Jed Gibbs – Graphic Designer

Sierra Hutton – Development Director

Cat McMillen – Patron Services Manager

Brian Palandri – Technical Director

Charlie Robin – CEO

Carol West – Director of Finance

THEATRE INFORMATION

ARRIVAL TIME

The Capitol Theatre typically opens 30 minutes prior to performance.

LOST AND FOUND

Located in the Capitol Theatre Box Office. Check with an usher or call the Box Office.

REFRESHMENTS

Beer, wine, soda, and water served in the Capitol Theatre's Lower Lobby and Mezzanine starting before the show until end of intermission. Enjoy your drink inside the theatre with our reusable house cup.

BOX OFFICE

☎ 509.853.ARTS (2787)

🕒 M-F: 11a-4p • Show Days: 11a-showtime

🌐 www.capitoltheatre.org

📍 19 S 3rd St, Yakima, WA 98901

ADMINISTRATION OFFICE

☎ 509.853.8000 🕒 M-F: 9a-5p

📍 129 N 2nd Street, Yakima, WA 98901

BOARD OF DIRECTORS

Kelly Murray – Chair

Michael Moen – Past Chair

Laura Terrazas – Secretary

Bill Dezelle – Treasurer

Reesha Cosby

Dana Eliason

Aaron Erickson

David Mack

Amy Maib

Raúl Martínez

Gabriel Munoz

Ozzie Park

Julie Rottman

Eric Silvers

Hilary Tanneberg

Susie Temple

Janice Deccio – Ex Officio

ACCESSIBILITY

RESTROOMS

Located in the Lower Lobby and on the Mezzanine.

ACCESSIBLE ELEVATORS

Available for travel between the Orchestra Level and the Lower Lobby in the Capitol Theatre.

FREE LISTENING SYSTEMS

Available for hearing impaired patrons (*call the Box Office for more information*).

ACCESSIBLE SEATING

Available on the Capitol's Orchestra Level.

WARNING: The photographing or sound recording of any performance or the possession of any such device inside this theatre, without written permission of the management, is prohibited by law.

The Washington State Clean Indoor Air Act prohibits smoking in the facility.

MAKE YOUR PLANS TODAY



YAKIMA SYMPHONY ORCHESTRA
PSYCHO

NOVEMBER
23
7:30PM

YSO Classical: Psycho

Bernard Hermann's film score is paired with John Williams' Essay for Strings, along with Jessie Montgomery's Shift, Change, Turn and Haydn's Second Cello Concerto.



YAKIMA SYMPHONY ORCHESTRA
HOLIDAY POPS SPECTACULAR

DECEMBER
08
4:00PM

YSO Pops: Holiday Pops Spectacular

The Yakima Symphony Orchestra joins forces with the Yakima Symphony Chorus for the thirteenth year of this annual family-friendly Yakima tradition



DECEMBER
10
6:00PM

McKinley Winter Concert 2024

McKinley families- we are back on the big stage at the Capitol Theatre! This event is free. Please don't let your McKinley student miss out on this awesome opportunity! We are very excited to continue this annual winter tradition.



DECEMBER
12&13
7:30PM

Rudolph the Red-Nosed Reindeer - The Musical

The musical based on the animated television special "Rudolph the Red-Nosed Reindeer"



DECEMBER
14
7:30PM

Holiday Cabaret 2024

The annual Holiday Cabaret returns! Charlie Robin and Al Fischer invite you to join them at the 4th Street Theatre for an evening of merriment and laughter, joined by a host of supremely talented friends, welcoming another festive holiday season.



DECEMBER
19&20
7:30PM

HADESTOWN

HADESTOWN intertwines two mythic tales – that of young dreamers Orpheus and Eurydice, and that of King Hades and his wife Persephone – as it invites you on a hell-raising journey to the underworld and back.

CAPITOL
THEATRE YAKIMA

509-853-ARTS | capitoltheatre.org



RED & CAROLYN
RAMSEY

Oran's
MARINE
RESTAURANT & BAR

N
HOEL

Blaine
Tamaki

Blaine & Preciosa
Tamaki Foundation

Good
Grain
Cider

WHEEL LINE
Cider

Heritage
BANK

The Print
Guys

PRESENTS THIS CAPITOL THEATRE COMMITTEE ENGAGEMENT

FIFTH ESTATE ENTERTAINMENT & ROUND ROOM LIVE

PRESENT



BASED ON THE DREAMWORKS ANIMATION MOTION PICTURE AND THE BOOK BY WILLIAM STEIG

BOOK & LYRICS BY

DAVID LINDSAY-ABAIRE

MUSIC BY

JEANINE TESORI

ORIGINALLY PRODUCED ON BROADWAY BY
DREAMWORKS THEATRICALS AND NEAL STREET PRODUCTIONS

STARRING

NICHOLAS HAMBRUCH KELLY PRENDERGAST NAPHTALI YAAKOV CURRY
TIMMY LEWIS TORI KOCHER JRAY KUHN ALLY CHOE SAGE JEPSON

LEON RAY ZACH PERRIN JACK SALEEBY DEMETRIO ALOMAR
CYNTHIA ANA RIVERA HOPE SCHAFER KATHERINE PALADICHUK KIANA CLARKE
CASEY LAMONT JOHN CARDENAS

SCENIC DESIGN
STEVEN KEMP

SOUND DESIGN
BEN SELKE

ORCHESTRATIONS
JOHN CLANCY

PUPPET DESIGN
CAMILLE LABARRE

PROP DESIGN
CAM UPTON

HAIR & WIG DESIGN
RACHAEL GEIER

MUSIC PROGRAMMING
STRANGE CRANIUM
PRODUCTIONS

MUSIC DIRECTOR
HARRISON ROTH

MUSIC CONTRACTOR
NATE PATTEN

PRODUCTION
STAGE MANAGER
TORI MONDELLO

COMPANY MANAGER
CHRISTOPHER
KETNER

TOUR MARKETING & PRESS
SOLOSHOE
COMMUNICATIONS

ADVERTISING CREATIVE
THE PEKOE GROUP

TOUR BOOKING
THE ROAD COMPANY
TRC.NYC

CASTING DIRECTORS
WOJCIK CASTING TEAM
SCOTT WOJCIK HOLLY BUCZEK, CSA

EXECUTIVE PRODUCER
DANI DAVIS AND ROB OLDS

GENERAL & PRODUCTION MANAGEMENT
ROUND ROOM LIVE
NICOLE SHARRA

MUSIC SUPERVISOR
CHRIS FENWICK

ORIGINAL PRODUCTION DIRECTED BY JASON MOORE AND ROB ASHFORD

DIRECTED AND CHOREOGRAPHED BY
DANNY MEFFORD

WWW.SHREKTHEMUSICALTOUR.COM



The show isn't over till you've eaten at the Hilton Garden Inn.



Stop by the bar and grille at the Hilton Garden Inn—just one block from the Capitol Theatre. Enjoy fresh, locally-sourced food paired with beers and wines from around the Valley.

401 E Yakima Ave | (509) 454-1111 | yakima.hgi.com



HOTEL MAISON TAPESTRY
COLLECTION
by Hilton™

Historic elegance with modern convenience

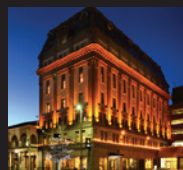


Temple Event Center Now Open

Supporting Yakima Arts, Culture, and History

thehotelmaison.com

321 East Yakima Avenue | (509) 571-1900



CAST

Shrek.....	Nicholas Hambruch
Fiona.....	Kelly Prendergast
Donkey.....	Naphtali Yaakov Curry
Lord Farquaad.....	Timmy Lewis
Dragon.....	Tori Kocher
Pinocchio.....	JRay Kuhn
Sugar Plum Fairy/Gingy/Young Fiona.....	Ally Choe
Wolf.....	Sage Jepson
Pig 1.....	Leon Ray
Pig 2.....	Zach Perrin
Pig 3.....	Jack Saleeby
Papa Ogre/Papa Bear.....	Demetrio Alomar
Mama Bear/Blue Bird.....	Cynthia Ana Rivera
Mama Ogre/Wicked Witch.....	Hope Schafer
Teen Fiona/Peter Pan/Tail.....	Katherine Paladichuk
Ugly Duckling.....	Kiana Clarke

SWINGS/STANDBYS

Casey Lamont John Cardenas
Dance Captain

UNDERSTUDIES

For Shrek: Sage Jepson, Zach Perrin
For Fiona: Kiana Clarke, Katherine Paladichuk
For Donkey: Leon Ray, John Cardenas
For Lord Farquaad: John Cardenas, Zach Perrin
For Dragon: Cynthia Ana Rivera, Hope Schafer
For Pinocchio: Jack Saleeby, John Cardenas
For Gingy: Katherine Paladichuk, Casey Lamont
For Wolf: John Cardenas, Jack Saleeby
For Mama Bear: Casey Lamont, Hope Schafer
For Papa Bear: John Cardenas, Casey Lamont
For Papa Ogre: John Cardenas, Leon Ray
For Pigs 1, 2, and 3: John Cardenas, Casey Lamont
For Ugly Duckling: Casey Lamont, John Cardenas
For Young Fiona: Casey Lamont, Hope Schafer, Kiana Clarke
For Wicked Witch: Casey Lamont, John Cardenas
For Mama Ogre: Casey Lamont, Cynthia Ana Rivera, Katherine Paladichuk
For Peter Pan: Casey Lamont, John Cardenas
For Teen Fiona: Casey Lamont, Hope Schafer, Kiana Clarke

MUSICIANS

Music Director: Harrison Roth
Associate Music Director/Keys 2: Chase Kessler
Drums: Nicholas Urbanic
Cello: Hannah Benjamin
Guitar: Joseph Levens
Bass: Michael Capadai

Please be advised that strobe lighting effects are used in today's performance.



The use of any recording device, either audio or video, and the taking of photographs, either with or without flash, is strictly prohibited. Please turn off all electronic devices such as cellular phones, pagers and watches.



LOCAL *Equals* **FRESH**



Since 1955 we've proudly
served our local community.
We're Yakima's only locally
owned & operated supermarket,
excelling in customer service!

IGA
Wray's
MARKET
YAKIMA'S FOOD STORE *fresh*

YAKIMA: 7200 W. Nob Hill Blvd. YAKIMA: 401 W. Nob Hill Blvd.
YAKIMA: 5605 Summitview SELAH: 5605 121 E. 3rd Ave.

MUSICAL NUMBERS

Act I

Big Bright Beautiful World
Story of My Life
The Goodbye Song
What's Up, Duloc?
What's up, Duloc? (Reprise #1)
Once Upon a Mysterious Time
I Know It's Today
Travel Song
Forever
I Know It's Today (Reprise)
Who I'd be

THERE WILL BE ONE 15-MINUTE INTERMISSION.

Act II

Morning Person
I Think I Got You Beat
What's Up, Duloc? (Reprise #2)
Make A Move
When Words Fail
Morning Person (Reprise)
The Arrival of Farquaad
Freak Flag
Wedding Procession
Big Bright Beautiful World (Reprise)
Beautiful Aint Always Pretty
This is Our Story

Get the card
that supports
local healthcare
workers.

Visit gesa.com to learn more.



Gesa
Credit
Union

Insured by NCUA

Gesa



Supporting local healthcare workers

DEBIT

VISA

Yakima's Heritage Television Station



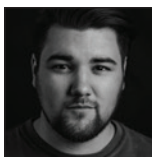
>JOHN KENNEDY O'CONNOR
NEWS DIRECTOR

OKIMA

**ACTION
NEWS**

>ALAN SILENCE
SPORTS

CAST



**NICHOLAS
HAMBRUCH**



**KELLY
PRENDERGAST**



**NAPHTALI
YAAKOV
CURRY**



**TIMMY
LEWIS**



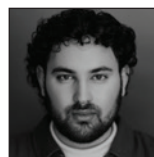
**TORI
KOCHER**



**JRAY
KUHN**



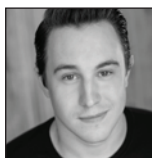
**ALLY
CHOE**



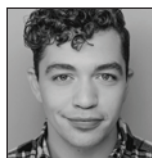
**SAGE
JEPSON**



**LEON
RAY**



**ZACH
PERRIN**



**JACK
SALEEBY**



**DEMETRIO
ALOMAR**



**CYNTHIA
ANA RIVERA**



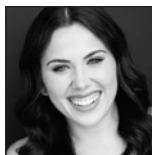
**HOPE
SCHAFER**



**KATHERINE
PALADICHUK**



**KIANA
CLARKE**



**CASEY
LAMONT**



**JOHN
CARDENAS**



WINNER!
8 TONY AWARDS INCLUDING
BEST MUSICAL

HADESTOWN

THE MYTH. THE MUSICAL.

MUSIC, LYRICS & BOOK BY
ANAÏS MITCHELL

DEVELOPED WITH & ORIGINALLY DIRECTED BY
RACHEL CHAVKIN

Thursday & Friday
DECEMBER 19&20

7:30PM

CAPITOL
THEATRE  YAKIMA

WHO'S WHO IN THE CAST

NICHOLAS HAMBRUCH (*Shrek*) (*he/him*) Nicholas is honored to join the Shrek family. Credits Include: *Jesus Christ Superstar*-50th Anniversary Tour (Pilate), *The Hunchback of Notre Dame* (Quasimodo), *Chess* (Anatoly), *Big Fish* (Edward Bloom). Instagram and TikTok: @nickofmusic.

KELLY PRENDERGAST (*Fiona*) (*she/her*) Previously Ginky on tour, Kelly is overjoyed to now wear the tiara! (Swing/US) *Ride The Cyclone*, (Swing/Jenna US) *Waitress*. Thank you ASP, Lohne Graham Management and my mom. My performances are dedicated to the memory of my dad. @kellyprendergast1

NAPHTALI YAAKOV CURRY (*Donkey*) (*he/him*) Credits: *Valentine*, *Twelfth Night* (Sebastian US), *Rent* (Ensemble/Benny US), *The Real Housewives of Motown* (Paul Williams). Education: B.F.A in musical theatre, University of Arizona. Follow me on IG @thats_nap to follow my artistic journey!

TIMMY LEWIS (*Lord Farquaad*) (*he/him*) Nat'l Tour debut! Off-Bway: *A Class Act*, *Woman of the Year*. Regional: The REV, John W. Engeman Theatre, Vermont Stage, Milbrook Playhouse. TV: *The Food That Built America*. Film: *The Line* w/ Alex Wolff and Halle Bailey. BFA: Penn State. @limmytewis

TORI KOCHER (*Dragon*) (*she/her*) Tour debut! Tori has performed in theme parks, piano bars, cruises, and award shows. Much love to Hayley, family, & Shrek team for supporting her in telling this beloved story of celebrating differences! BFA Belmont MT @torikocher#autismproud

JRAY KUHN (*Pinocchio*) (*he/him*) JRay is excited to make his national tour debut! He is passionate about spreading light around the world. He has toured with BYU Young Ambassadors and Living Legends and founded the Rhythm N' Soul Collective, an Africana performing group. @jraykuhn

ALLY CHOE (*Sugar Plum Fairy/Ginky/Young Fiona*) (*she/her*) Ally is excited to be making her national tour debut! She would like to thank her family for being her biggest support and The Hell's Kitchen Agency! Select credits: *Wonderland*, *Godspell*, *Puffs*, *Oklahoma!* BFA Brigham Young University 2023 @allychoe

SAGE JEPSON (*Wolf*) (*they/them*) Sage is a multi-hyphenate performer based in New York. Select Credits: *Dandelion*, *Rent*, *Rocky Horror: Seussical*. "Grace+Sage" and "lavender boy" on Spotify. Grateful to the family, AA and Kreativ. BFA Boston Conservatory @sagejepson

LEON RAY (*Pig 1*) (*he/him*) Credits: Disney Cruise Line (Vocalist), *Into the Woods* (Witch), *Songs For A New World* (Man 2), *Urinetown* (Hot Blades Harry), *Twelfth Night* (Malvolio), *Bring It On* (Twig). Thanks to my mother, family, friends and WOBC for their infinite

support! @Leon_Ray__

ZACH PERRIN (*Pig 2*) (*he/him*) Zach is ecstatic to be making his National Tour Debut with *Shrek the Musical*!! Graduate from West Texas A&M University! Off-Broadway Credit: *Friends the Musical Parody*. Zach is very excited to be marrying his beautiful Fiancé later this year!!

JACK SALEEBY (*Pig 3*) (*he/them*) *The Wizard of Oz* (Scarecrow, USA & China Tour), *Footloose* (Willard, Norwegian Cruise Line), Regional: *Mary Poppins* (Bert), *Boy From Oz* (Greg), *West Side Story* (Action), *Newsies* (Finch), *Twelfth Night* (Orsino), Rep: PMA Agency

DEMETRIO ALOMAR (*Papa Ogre/Papa Bear*) (*he/him*) Demetrio Alomar is SHOCKED to be getting paid to cut up and act a fool all over North America. He thanks the amazing cast and creative team, as well as Mami, Mig, Shyanne, Suki, and Breyanna! Check out his credits and clips on Instagram: @dalomar02

CYNTHIA ANA RIVERA (*Mama Bear/Blue Bird*) (*she/her*) Cynthia's National Tour Debut! Special thanks to Take 3 Talent & the *Shrek* Team! God, without you nothing is possible Mom, J, Fam I love you endlessly. ALWAYS FOR YOU DAD, you've got the best seat in the house! IG: @cynthianarivera

HOPE SCHAFER (*Mama Ogre/Wicked Witch*) (*she/her*) Hope is overjoyed to be a part of this team! She's an NYC based artist who has been performing regionally from a young age and, recently, internationally with Princess Cruise Lines. Thanks to her loved ones and Jim Keith at MTA! insta:@hopeeschafer

KATHERINE PALADICHUK (*Teen Fiona/Peter Pan/Tail*) (*she/her*) National Tour: *Rudolph* (Elf/ Rudolph US). Regional: *Witnesses* (CCAE), *Bottle Shock* (CCAE), *Joseph and the Amazing Technicolor Dreamcoat* (Candlelight). All love to my family, friends, and ATB Talent! BFA: Cal State Fullerton. @katherinepaladichuk

KIANA CLARKE (*Ugly Duckling*) (*she/her*) is thrilled to join the cast. Tours: *Pomp, Snow & Cirq'UMstance* (Snow). Regional: *BEAUTIFUL* (Lucille/ Shirelle), *Footloose* (Ariel U/S, Urleen). Grateful for all my loved one's & ShuShu mgmt. support. @kianaclarke_ Psalm 46:5

CASEY LAMONT (*Swing/Dance Captain*) (*she/her*) Original Cast: *His Story* (Lucifer), Off-Off Broadway: *Rathskeller* (Gluttony) Other Credits: *An American in Paris* (The Phoenix Theatre Company), *West Side Story* (Utah Festival Opera & MT). Thanks to my family, friends, and Inclusive Management! @_caseylamont

JOHN CARDENAS (*Swing*) (*he/they*) Tour: *SpongeBob* (Swing/SpongeBob US), *Fiddler*

**BRAV
BRAV
BRAV**



noel



***Enthusiastic
Supporters of the Arts***

WHO'S WHO IN THE CAST

on the Roof (Fiddler). Regional: *Hello Dolly*, *La Cage*, *WSS*, *Guys & Dolls*, *Spamalot*... and more. Thankful for Dad, Wojcik Casting & Shrek Team. "Mom you have the best seat in the house."
@Johnnie_321

DAVID LINDSAY-ABAIRE (*Book and Lyrics*) is a playwright, screenwriter, lyricist, and librettist. Broadway: *Kimberly Akimbo* with composer Jeanine Tesori (five Tony Awards, including Best Musical, Best Book and Best Score); *Rabbit Hole* (Pulitzer Prize for Drama); *Good People* (NY Drama Critics Circle Award for Best Play, Horton Foote Prize); *Shrek the Musical* with Jeanine Tesori (Kleban Award for Lyrics); *High Fidelity* with Tom Kitt and Amanda Green. Off Broadway: *Kimberly Akimbo* (Lortel, NYDCC, OCC and Drama Desk Awards for Best Musical); at MTC, *Ripcord*, *Kimberly Akimbo* (the play), *Wonder of the World*, *Fuddy Meers*; at Soho Rep, *A Devil Inside*. Film: *The Family Fang*, *Rise of the Guardians*, *Rabbit Hole*, *Oz the Great and Powerful*, *Poltergeist*, *Inkheart*, *Robots*. Member: Dramatists Guild, WGA, ASCAP. David is also, along with Tanya Barfield, Co-Director of the Playwriting Program at The Juilliard School.

JEANINE TESORI (*Music*) is a composer of musical theatre, opera and film. Her musicals include *Kimberly Akimbo*; *Soft Power*; *Fun Home*; *Shrek The Musical*; *Caroline, or Change*; *Thoroughly Modern Millie*; and *Violet*. She is a two-time recipient of the Tony Award for Best Score and a two-time Finalist for the Pulitzer Prize for Drama. Her operas include *A Blizzard on Marblehead Neck*; *The Lion*, *The Unicorn and Me*; and *Blue*, which received the MCANA Award for Best New Opera. For her opera *Grounded*, she became one of the first two women to be commissioned by The Metropolitan Opera. Tesori served as Supervising Vocal Producer on Steven Spielberg's *WEST SIDE STORY*. She is the Founding Artistic Director of New York City Center's Encores! Off-Center series and a lecturer in music at Yale University.

DANNY MEFFORD (*Tour Direction/Choreography*) is thrilled to make his directorial debut with *Shrek*. He has choreographed three Tony Award winners for Best Musical: *Kimberly Akimbo*, *Dear Evan Hansen*, *Fun Home* - along with other Broadway shows. He made dances for *Dickinson* on AppleTV+ and staged the high school theatre production for *Rise* on NBC. Some other choreographic highlights include an international tour of *Sound of Music*, numerous off-Broadway shows like *Good Person of Szechwan* and *Miss You Like Hell*, and some very downtown NY theatre like *Dance Dance Revolution* and *Here's Hoover!* He has an MFA in Acting from Brown University/Trinity Rep and a BS from the University of Evansville. Much love to his family. Enjoy the show!

HARRISON ROTH (*Music Director*) Harrison is an NYC-based Musician. MD credits include: Bare, Playhouse Square; *The Sound of Music*, Cleveland Orchestra; and *Songs from an Unmade Bed*, 54 Below. Many thanks to Chris², Jeanine, David, Danny, the stellar *Shrek* team, and family. BWMT-MD

CHRIS FENWICK (*Music Supervisor*) Music Supervisor: Broadway revival of *Once On This Island* (Tony Award, Best Revival). Music director: *Kimberly Akimbo* (Tony Award, Best Musical), *Soft Power* (Pulitzer finalist), Broadway revival of *Sunday in the Park with George*, starring Jake Gyllenhaal, Public Theater and Broadway productions of *Fun Home* (Tony Award, Best Musical; Pulitzer finalist). Chris music directed the original productions of Michael John LaChiusa's *Giant*, *Los Otros*, *Queen of the Mist*, and *See What I Wanna See*.

STEVEN C. KEMP (*Scenic Design*) Credits: *Sesame Street Live*, *Peppa Pig's Sing Along Party*, *Blippi The Wonderful World Tour*, *Baby Shark Live*, *PJ Masks Live*. Over 120 designs for opera with 40 companies and over 50 designs in NYC including the Off-Broadway revival of *Tick, Tick...Boom!* as well as numerous productions for regional theatres, cruise ships and international tours. 10 Broadway productions as an Associate Designer including *Jesus Christ Superstar* and *Memphis*. @stevenckempdesign

BEN SELKE (*Sound Design*) Select Sound Design credits include: *The Illusionists* Broadway, *A Night with Janis Joplin*, *Big Apple Circus*, *Jukebox Hero The Musical*, *Rock of Ages*, *Swing! The Musical*, *PJ Masks Live*, *Blippi The Musical*, *Baby Shark Live*, and *Million Dollar Quartet*. Ben would like to thank his amazing wife for all her support and his two children, Charlotte and Joshua, for making every day an adventure.

CAMILLE LABARRE (*Puppet Design*) Camille Labarre is Founder and Creative Director of LAB LAB, a puppet and prop shop in NYC. Broadway: *Water for Elephants* (Puppet Designer), *The Skin of Our Teeth*, *Into the Woods* (Assistant Puppet Designer / Builder). Regional: Alliance Theater. Selected TV: *Sesame Street*, *Fraggle Rock* (Puppet / Prop Builder). Selected Ads: Amazon Prime Day, Honda Holiday, Dunkin' x NHL, Hershey's (Puppet / Prop Builder). Selected Live Events: Thom Browne SS 2022 - New York Fashion Week (Puppet Builder)

CAM UPTON (*Prop Designer*) For 15 years Cam Upton has been creating props for theater, film and television. Film: *ParaNorman*, *The Boxtrolls*, and *Daniel Isn't Real*. Theater: *Oh Hello* (Broadway); *Water for Elephants* (Alliance Theatre) Television: *Random Acts of Flyness*; *AHS*; *Beanie Mania*; *SNL*, *The Walking Dead* and *Severance*. Other: Macy's Christmas Windows.

We love the Capitol Theatre!

We are committed to promoting inclusion and justice in the Yakima Valley, and that includes our passionate support of the Capitol Theatre.



**Blaine & Preciosa
Tamaki Foundation**

WHEEL LINE
Cider

Currently open 12pm-4pm
every 3rd Saturday from
September through April.
Our summer season runs
from May through August.
Saturdays 3pm-7pm and
Sundays 12pm-4pm.



@wheelinecider | www.wheelinecider.com

WHO'S WHO IN THE CAST

JOHN CLANCY (*Orchestrations*) Broadway: *The Notebook*, *Kimberly Akimbo* (Tony/Grammy Noms.), *Mean Girls* (Tony nom.), *1776* (2022 revival), *Fun Home* (Tony nom.), *Diana the Musical*, *The Prom*, *Tuck Everlasting*, *Shrek the Musical* (Tony nom.), *Cats* 2016 (Dance Arr.) Off-Bway/Reg. Theater: *A Transparent Musical*, *The Karate Kid*, *JOY*, *The Secret Life of Bees*, *Gun & Powder*, *Cornelia Street*, *Becoming Nancy*, *Soft Power* (Dance Arr.) *The Fortress of Solitude*, *Jasper in Deadland*, *Just So*. 2018 Tony Awards Opening by Sara Bareilles.

MARISA CHRISTIE (*Production Stage Manager*) Thanks Mom and Dad!

SEONJAE KIM (*Associate Director*) is thrilled to be a part of Danny's beautiful vision of *Shrek*. Favorite credits: *KPOP* (Broadway), *Riot Antigone* (La MaMa/Ars Nova), *The Wolves* (Atlantic), and *Wild Goose Dreams* (SpeakEasy) BA: Northwestern. www.seonjaekim.com or @sunintheskylatterj

MARK MYARS (*Associate Choreographer*) Broadway Associate Choreographer: *Dear Evan Hansen* (Tour and West End), *The Cher Show*, *My Fair Lady* (Tour and West End), *SpongeBob Squarepants*, *War Paint*, *If/Then* (Tour), *Wicked* (International Dance Supervisor) www.markmyars.com

SOLOSHOE COMMUNICATIONS, LLC (*Tour Marketing & Press*) The SoloShoe team is thrilled to be a part of *Shrek The Musical*. Founded by Craig Boleman and Kass Prince in 2000, the firm with a funny name has led the marketing efforts for tours including *KODO*, *On Your Feet!*, *Dirty Dancing in Concert*, *Spider-man Into the Spiderverse in Concert*, *The Choir of Man*, *MST3K*, *Taj Express* to name a few. Currently representing *Bluey's Big Play* (Wackadoo!), *Johnny Cash: The Official Concert Experience*, *The Ten Tenors*, *Malevo* and *Dick & Angel Dare to Do It*. fun people • serious creative

DANIDAVIS (*Executive Producer*) is an Emmy award winning writer, Tony nominated Broadway producer, Helen Hayes award recipient, an Emmy nominated television and theater director/choreographer, and theatrical touring producer. Broadway: *Little Women - The Musical* (2 Tony nominations), *The Lonesome West* (4 Tony nominations). Touring: *Billy Elliot* (Helen Hayes), *Little Women - The Musical*, *Dreamworks' Shrek The Musical*, *The Wedding Singer*, *Flashdance*. Television: *Handel's Messiah Rocks* (Sony/PBS - 2 Emmy awards, 7 nominations), *Girlstarter* (Discovery), *Kenny Rogers' Christmas Gift* (Hallmark), Regional: *Cindy of Arc* (The Intiman/Baltimore Stage), *Mamma Mia!* (Various), *The Full Monty* (CRT). A graduate of Duke University, Dani serves on Duke's Entertainment Media & Arts Network steering committee, as well as on boards of organizations in New York City and Cape Cod. She is

the proud mother of Noah Pelty and Nina Howland. www.thedanidavis.com

THE ROAD COMPANY (*Tour Booking*) Founded in 1997 by Stephen Lindsay and Brett Sirota. In addition to *Shrek*, current representation includes *Wicked*, *Moulin Rouge!*, *Back to the Future*, *Kimberly Akimbo*, *Beetlejuice*, *Ain't Too Proud*, and more.

ROUND ROOM LIVE (*Producer*) is the leading producer and promoter of exhibitions and family show entertainment, specializing in transforming both new and iconic intellectual property into engaging and thrilling live events. Round Room creates unique live experiences tailored to the distinct character of each property and produces the highest quality productions for audiences around the world. Their current roster of touring theatrical shows includes: *Blippi: The Wonderful World Tour*, *Blippi The Musical* (2023 Olivier Award nomination for Best Family production), *Sesame Street Live!*, *Peppa Pig Live*, *Nitro Circus 20th Anniversary Tour*, and *Blue's Clues & You! Live On Stage*. Round Room's Immersive and Entertainment Experiences division is currently touring: *Formula 1: The Exhibition*, *Jurassic World: The Exhibition*, *Mandela: The Official Exhibition*, and *Tupac Shakur: Wake Me When I'm Free*.

FIFTH ESTATE ENTERTAINMENT (*Producer*) Founded in 2016, Fifth Estate Entertainment is a New York based theatrical production and general management company specializing in developing and producing live entertainment for the stage as well as managing tours, New York City productions, and special events. Recent productions include the 10th Anniversary tour of *Rock of Ages*, *Mystery Science Theater 3000 Live*, and *In Residence* on Broadway.

WOJCIK CASTING TEAM (*Casting*) B'way: *The Little Prince*. Tours: *The Kite Runner*, *Jesus Christ Superstar* (1st & 2nd National), *Motown*, *Something Rotten!*, *RENT*, *Kinky Boots*, *Rock of Ages*, *An Officer & A Gentleman*, *Flashdance*, *Joseph/Dreamcoat* and *A Chorus Line* as well as *Dreamgirls* and *Jekyll & Hyde* in S Korea and *West Side Story* in Tokyo, NCL: *The Donna Summer Musical*, *Cirque's Bad Apple @ NY/NY* in Las Vegas and extensive branded family entertainment tours including *Mr Blippi*, *American Girl Doll*, *Blues Clues*, *Cocomelon*, *Baby Shark* and more. Off-Broadway: *Othello: The Remix*, *Church & State*, *Tennessee Williams' The Two Character Play* and more. Regional: Multiple seasons/shows for Riverside Theatre, FL; Tuacahn PAC, UT; Theatre Aspen and Arvada Center, CO; Stages St. Louis, MO, Theatre Raleigh, NC; The Engeman Theatre, 92nd Street Y and Summer Theatre of New Canaan. NY Developmental: *SuperYou*. www.wojcasting.com @Wojcasting



BALE BREAKER

BREWING COMPANY

Located 10 minutes from downtown Yakima, right in the middle of our family hop farm. balebreaker.com



Heritage

BANK



Proud sponsor of the Capitol Theatre

WHO'S WHO IN THE CAST

STAFF FOR *SHREK THE MUSICAL*

PRODUCERS

FIFTH ESTATE ENTERTAINMENT

Dani Davis

ROUND ROOM LIVE

COMPANY MANAGER

Christopher Ketner

PRODUCTION MANAGEMENT

Will Farnham

Nicole Sharra

Senior Production Manager

General Manager

CASTING

WOJCIK CASTING TEAM

Scott Wojcik Holly Buczek, CSA

TOUR BOOKING

THE ROAD COMPANY

Stephen Lindsay Brett Sirota

Gracie Lewis Shawn Willett Quinn Wasson

Shane Parksmith AnaBella Kalish Jacob Hoffman

Creative Producer Josh Blackburn
Associate Creative Producer Becca Smith
Merchandise The Araca Group
Stage Manager Marisa Christie
Assistant Stage Manager Sofia Itskovich
Associate Director Seonjae Kim
Associate Choreographer Mark Myers
Associate Production Manager Bryant Montalvo
Score Manager Chris Anselmo
Music Contractor Nate Patten
Associate Scenic Designer Josh McEwen
Associate Lighting Designer Jasmine Moore
Assistant Sound Designer Jacob Freeman
Light Programmer/
Associate Lighting Designer Paul Sonleitner

Associate Costumes Ricky Lurie
Head Carpenter Ashlee Cheyenne Oliver
Assistant Carpenter Bridgett Rayburn
Flyman Preston Speaker
Production Electrician John Trowbridge
Head Electrician Kamryn Neffle
Writing Associate Darius Buckley
Assistant Electrician/Spot Op Nova Schultz
Head Sound Teddy Woosley
Assistant Sound Jorge Guerra
Production Properties Indy Sulleiro
Wardrobe Supervisor Hannah Beecher
Hair and Makeup Supervisor Bridgit Crider
Vocal and Dialect Coach Alison Weller
Production Assistant Maci Bass
Electronic Music Design Strange Cranium
Billy Jay Stein, Hiro Iida, Ko Tanaka
Copyist Joann Kane Music – Kyle Brenn
Fifth Estate Assistants Natalie Rine,
Sophie Glassman, Liv Rhodes, Jasmine Zang
Casting Associate Cassie Maguire
Tour Creative The Pekoe Group
Video Content & Photography Full Out Creative
Tour Accommodations Located
Trucking OTL
Transportation Arrow Stage Lines and Senators Coach

Visit capitoltheatre.org
to ensure you get the
BEST TICKET PRICES on
all the **GREAT EVENTS**
at the **Capitol Theatre!**

**Our Mission Is to Increase
Our Clients' Wealth**

TIETON 
Capital Management™

*Proudly Supporting
Yakima Valley's Arts*

TietonCapital.com

WE CAN'T STOP THE *Beat*

KATS
YAKIMA'S ROCK STATION
94.5

NEWSTALK KIT
1280 AM 101.3 FM

92.9 **THE BULL**
#1 FOR NEW COUNTRY

107.3
KFFM
Yakima's #1 Hit Music Station!

townsquare
media yakima





The Original Television Classic Comes To Life!

**“Bring your kids...and start
a new kind of holiday tradition”**

- Chicago Daily Herald

**“This is a show that will go down in history...
as a smashing HIT!”**

- Dallas Examiner

**Thursday & Friday
DECEMBER 12&13
7:30PM**



"Rudolph the Red-Nosed Reindeer" animated television special adapted from a story by Robert L. May and the song by Johnny Marks. All elements © and ™ under license to Capitol Theatre.

Contributors

We gratefully acknowledge the contributions from donors to our Annual Fund Drive. Their help makes all our Capitol Theatre programs possible. This list represents cumulative donations received July 1, 2023 to August 31, 2024.

President's Club

(\$5,000 or more)

Jack & Connie Bloxom
Evelyn Paulsen
Red & Carolyn Ramsey
Blaine & Preciosa Tamaki Foundation

Director's Club

(\$2,500 - \$4,999)

Mark & Debbi Baldwin
Gay Dorsey & Mike Poppoff
Al Fischer & Charlie Robin
Mike & Jennifer Norton

Producer's Club

(\$1,000 - \$2,499)

Nancy Abbenhaus
Ben & Leanne Antonio
Rick & Linda Beck
Greta Bryan
The Crockett Family
Bill & Dawn Dezellem
Dana Dwinell
Aaron & Sami Erickson
Joe & Connie Farina
James Fitch
Charles Forster & Joan Jacobs
Bunker & Larry Frank
Richard & Darlene Frye
Rob Gallion & Karen Davis
Eric & JoAnne Hanses
Dr. Kevin & Mrs. Rena Harrington
Harlan & Laura Hefner
Linda Kerslake
Lloyd Crabtree & Elisabeth Kuhr
Neal Lessenger
Pam & Stan Martinkus
The Moen Family
Brendan & Aileen Monahan
Duane & Kirsten Monick

Donna Moultray
Kelly Murray
Jocelyn & Manuel Pedrosa
Kip & Lyndia Ramsey
Jim & Barbara Riley
Julie & Soren Rottman
Susan & Chris Saunders
Ken & Sharon Smith
Gail Weaver

Sustainers

(\$500 - \$999)

Anonymous
Brian & Theresa Bell
Terry & Jennifer Bliesner
Lori & Mark Cleveland
Sonja Dodge
Madelyn Fordyce
Cathy Forenpohar
Lynn & Bill Gilmore
Eric & Nancy Gustafson
John I. Haas
Doyle Hardy & April Yates Hardy
Susan & Roger Head
Karen Hyatt
Mel Leskinen
Peggy Lewis Fund
Addy & Josh Logsdon
David & Lindsay Mack
Eula Miller
Megan Murphy
Toni & Garth Newman
Dr. Carl Olden
Linda Ridings
Patricia Roll
Rebecca Scholl
Ken and Sylvia Severn
Sally Simon
J and Joy Stenehjelm
Kristy Tackett

Paul & Karen Tompkins
George & Mavis Velikanje

Patrons

(\$250 - \$499)

Timothy & Sonja Alexander
Ruth Ann Allen
The Allreds
Susan Arb
Phillip & Marilyn Bird
Jennifer Bishop
The Bogoyas Family
Enedina & Byron Boswell
Michael & Lynn Brant
Judi Brown
Michael & Cheryl Bush
Kay Carbery
David Carlson
Linda Clark
Pam Cleaver
Patrice Cornelius
Quinn & Aaron Dalan
Julie & Dennis Dean
Bill & Jan Drenguis
Alice Faringer
Carter & Linda Fjeld
Kathleen Fletcher
John Funk
Ashley Gamache
Edward & Denise Gonzales
David & Cindy Hargreaves
Dr. Marjorie Henderson
Pam & John Henderson
Ben & Ann Hittle
Kevin & Heather Hudson
Rosemarie Jaenicke
Portia Jones
Kapuza Lighty, PLLC
Fred & Amy Karau
Beth Klingele

Matthew LaCombe
 Adrienne Landin-Simond
 Jeff Teresa Louman
 Kay Maletta
 Gisela Martin
 Nancy & Russ Mazzola
 Deb and Craig McCown
 Ray & Sandie Menard
 Sharon Miracle
 Phil & Shannon Moyer
 KDA Architecture Dale Murray
 Suzan Nettleship
 Richard Nicksic
 Joe Nieto
 Rosylen Oglesby
 Dorothy Olafson
 Kathleen Paganelli
 Mike & Nova Pepper
 Doug & Darlene Picatti
 Stanley S. & Karen A. Pratt
 Bob & Brenda Price
 Keith & Sharon Qunell
 David & Purna Rankin in honor of
 Virginia Gilbert
 Beth Richardson
 Diann & Ronald Rockstrom
 Kimberly Ruck
 Dr. Tamera Schille Straub & Dr. Tim
 Straub
 Roy & Barbara Simms
 Cheryl Smith
 Patrick & Colleen Smith
 Ken & Millie Stenehjelm
 Mary Stephenson
 Angela & Garth Sybouts
 Bette Taylor
 Mark Taylor
 Laura Terrazas
 Marsha Therrien
 Tree Top

Mark & Lori Troianello
 Robin Walker
 Greg Huefner & Lisa Wallace
 Carol West

Curtain Raisers (\$100 - \$249)

Anonymous
 Jim and Karin Avery
 John A. Baule
 Ed & Gail Boob
 Richard & Gail Brown
 Sarah Brown
 Effie Burton
 Bill & Ina Bush
 Richard & Jessica Camp
 Margie Campbell
 Robert Coleman
 Ralph & Cyndi Conner
 Brett Dillahunt & Carolyn Cal-
 hoon-Dillahunt
 Patty Dion
 Nicole Donegan
 Bill & Vicki Elkins
 Victor and Julia Epperly
 Kathy Erickson
 Rick Fairbrook & Gay Scott
 Jill & Joe Falk
 Ryan and Gena Franklin
 Andy Granitto
 Donna & Mark Grassel
 Jeannie & Jim Grippin
 Norma Haney
 Greg Hayter
 Don & Mary-Jane Hovis
 Randy & Michelle Juette
 Karren & Jake Jundt
 Royal & Kathryn Keith
 Laural Klein
 Deborah & Randy Kloster

Tom Boyd & Becky Lang-Boyd
 Janis Luvaas
 Kally Marquis in memory of Judy
 Weston
 Jaci Martin & Richard Bartheld
 Kathleen McCarthy
 Michael McCloskey
 Walter Meyer
 Jim & Sherri Moon
 Kristin Morrison
 Mary Ann Myers
 Sandra Pace
 Terese & Jess Padilla
 Matt & Joy Petersen
 Christine Poplaski
 Dana Pride
 Patricia Reese
 Nancy & Kevin Roy
 Joan & Tedd Rudd
 Kathy & Nick Schultz
 James and Lynn Seamons
 Paula & Murray Slaye
 Ann Tritz
 Megan Tweedy
 Doris W. Unruh
 Lorena Voelker
 Glennis Wilson
 Pat & Susan Wooters
 Jean Wyckoff
 Marco Yolo
 Dave Zabell

In memory of: Michael Chandler, Dolores Galloway, Shelia Leskinen, Tony E. Sloan, and Martha Stadelman.



CAPITOL Friends

**BECOME
A FRIEND**

Join other patrons with
passion and experience the
theatre beyond the stage.



We appreciate the subscribers that keep our seats filled and the donors that keep our lights on. Our Capitol Friends program is another opportunity for these supporters and others with a passion for the arts to build a more intimate relationship with the Capitol Theatre. Each season when you give or subscribe, include Capitol Friends and enjoy these special perks:

**EXCLUSIVE
FRIENDS SEASON
LAUNCH PARTY**

**EARLY
ADMITTANCE &
VIP ENTRANCE
ACCESS**

**ROBERTSON
ROOM
ACCESS**

**PRE-SALE
OPPORTUNITIES
FOR SPECIAL
EVENTS**

**DRINK
DISCOUNTS AT
LOBBY BAR**

**EXCLUSIVE
FRIENDS
EVENTS**

**SPECIAL
THEATRE
TOURS**

**EXCLUSIVE
VOLUNTEER
OPPORTUNITIES**



RED & CAROLYN RAMSEY



Blaine & Preciosa
Tamaki Foundation



GAY DORSEY &
MIKE POPPOFF



The Capitol Theatre Committee wishes to honor our corporate underwriters
for their community leadership and commitment to our Theatre and
its role in the quality-of-life of our valley.