

**CAPITOL**  
THEATRE  YAKIMA

RED & CAROLYN  
**RAMSEY**

**Wray's**  
**MARKET**  
YAKIMA'S FOOD STORE *fresh*

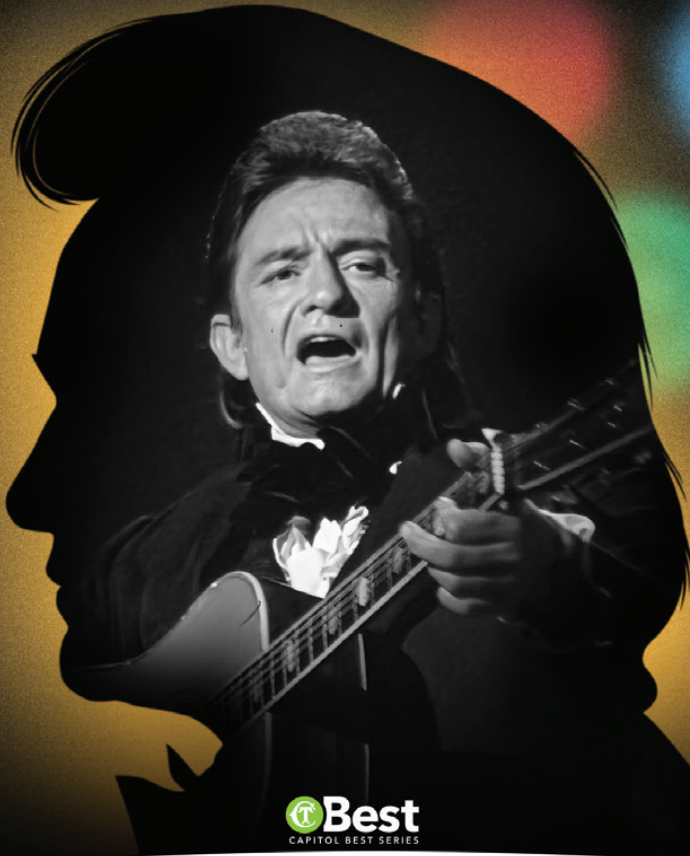
**N**  
noel



GEALIVE, QUATRO ENTERTAINMENT, MAPLE TREE ENTERTAINMENT, THE ESTATE OF JOHNNY CASH & SANDBOX SUCCESSION PRESENT

# JOHNNY CASH

THE OFFICIAL CONCERT EXPERIENCE



 **Best**  
CAPITOL BEST SERIES

 **Blaine & Preciosa**  
Tamaki Foundation

**ABEYTA**  
**NELSON**  
INJURY LAW

World Quality Control  
**GHMOEN** LLC

 **Heritage**  
BANK



## CAPITOL THEATRE SUPPORT TEAM

**Charlie Robin** - CEO  
**Sierra Hutton** - Development Director  
**Meghan Darragh** - Administrative Assistant  
**Jed Gibbs** - Graphic Designer  
**Cat McMillen** - Patron Services Manager  
**Brian Palandri** - Technical Director  
**Carol West** - Director of Finance

## THEATRE INFORMATION

### ARRIVAL TIME

The Capitol Theatre typically opens 30 minutes prior to performance.

### LOST AND FOUND

Located in the Capitol Theatre Box Office. Check with an usher or call the Box Office.

### REFRESHMENTS

Beer, wine, soda, and water served in the Capitol Theatre's Lower Lobby and Mezzanine starting before the show until end of intermission. Enjoy your drink inside the theatre with our reusable house cup.

### BOX OFFICE

☎ 509.853.ARTS (2787)  
🕒 M-F: 11a-4p • Show Days: 11a-showtime  
🌐 [www.capitoltheatre.org](http://www.capitoltheatre.org)  
📍 19 S 3rd St, Yakima, WA 98901

### ADMINISTRATION OFFICE

☎ 509.853.8000 🕒 M-F: 9a-5p  
📍 402 E Yakima Ave suite 777, Yakima, WA 98901

## BOARD OF DIRECTORS

**Kelly Murray** - Chair  
**Michael Moen** - Past Chair  
**Laura Terrazas** - Secretary  
**Bill Dezelle** - Treasurer  
**Reesha Cosby**  
**Dana Eliason**  
**Aaron Erickson**  
**David Mack**  
**Amy Maib**  
**Raúl Martínez**  
**Gabriel Munoz**  
**Ozzie Park**  
**Julie Rottman**  
**Eric Silvers**  
**Hilary Tanneberg**  
**Susie Temple**  
**Janice Deccio** - Ex Officio

## ACCESSIBILITY

### RESTROOMS

Located in the Lower Lobby and on the Mezzanine.

### ACCESSIBLE ELEVATORS

Available for travel between the Orchestra Level and the Lower Lobby in the Capitol Theatre.

### FREE LISTENING SYSTEMS

Available for hearing impaired patrons (call the Box Office for more information).

### ACCESSIBLE SEATING

Available on the Capitol's Orchestra Level.

**WARNING:** The photographing or sound recording of any performance or the possession of any such device inside this theatre, without written permission of the management, is prohibited by law.

The Washington State Clean Indoor Air Act prohibits smoking in the facility.

RED & CAROLYN  
**RAMSEY**



**ABEYTA  
NELSON**  
INJURY LAW



..... PRESENTS THIS CAPITOL THEATRE COMMITTEE ENGAGEMENT .....

GEALIVE, QUATRO ENTERTAINMENT, MAPLE TREE ENTERTAINMENT, THE ESTATE OF JOHNNY CASH & SANDBOX SUCCESSION  
*present*

# JOHNNY CASH

## THE OFFICIAL CONCERT EXPERIENCE

### FEATURING

Eric Hofmanis • Adam Pope  
Debbie Horton • Brittany Grove  
Jonathan Schneider • Peter Michaels, JR.

### CREATIVE DIRECTOR

Dean Elliott

### TOUR MANAGER

Graeme Cooper

### STAGE MANAGER/BACKLINE TECH

Peter Molnar

### LIGHTING DESIGN

Innovative Intensity, Inc. | Michael Berger

### SET DESIGN

Sam Roseman

### PRODUCTION DESIGNER

Z Frame Inc. | Perry Freeze

### AUDIO ENGINEER

Graham Tobias

### LD/VIDEO TECHNICIAN

Oscar Lujan

### CASTING

FRANCK CASTING

Alison Franck

### TOUR MARKETING

SOLOSHOE COMMUNICATIONS, LLC

### NATIONAL PRESS

TELLEM GRODY PR

### NON TOURING PRODUCTION MANAGER

Howard Hopkins

### GENERAL MANAGEMENT

QUATRO ENTERTAINMENT

Ralph Schmidtke

### EXCLUSIVE TOUR DIRECTION

ROADCO ENTERTAINMENT

Didi Perez Jenny Sirota

Arianna Giorgetti Ruth Laurence Will Whitaker

### SPECIAL THANKS

John Carter Cash

**WWW.JOHNNYCASHCONCERTEXPERIENCE.COM**



# Hilton Garden Inn®

The show isn't over till you've eaten at the Hilton Garden Inn.



Stop by the bar and grille at the Hilton Garden Inn—just one block from the Capitol Theatre. Enjoy fresh, locally-sourced food paired with beers and wines from around the Valley.

401 E Yakima Ave | (509) 454-1111 | [yakima.hgi.com](http://yakima.hgi.com)



## HOTEL MAISON

TAPESTRY  
COLLECTION  
by Hilton™

*Historic elegance with modern convenience*

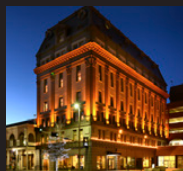


Temple Event Center Now Open

**Supporting Yakima Arts, Culture, and History**

[thehotelmaison.com](http://thehotelmaison.com)

321 East Yakima Avenue | (509) 571-1900



# MUSICIANS

---

Guitar / Vocals .....	<b>Eric Hofmanis</b>
Guitar / Vocals .....	<b>Adam Pope</b>
Electric Guitar .....	<b>Debbie Horton</b>
Keyboards / BG's.....	<b>Brittany Grove</b>
Drums / BG's .....	<b>Jonathan Schneider</b>
Bass Guitar / BG's .....	<b>Peter Michaels, JR.</b>

We believe in building  
strong communities.

Serving our neighbors is what we do. It's what we've done for more than 95 years. And it's as core to our company as our banking services.

Learn more at [heritagebanknw.com/community](https://heritagebanknw.com/community).



**Heritage**  
BANK



Equal Housing Lender | Member FDIC







**LOCAL** *Equals* **FRESH**



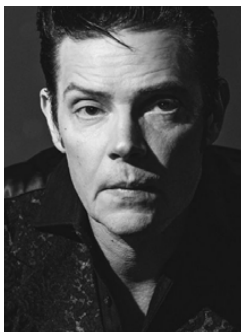
Since 1955 we've proudly  
served our local community.  
We're Yakima's only locally  
owned & operated supermarket,  
excelling in customer service!

**IGA**  
**Wray's**  
**MARKET**  
YAKIMA'S FOOD STORE *fresh*

YAKIMA: 7200 W. Nob Hill Blvd. YAKIMA: 401 W. Nob Hill Blvd.  
YAKIMA: 5605 Summitview SELAH: 5605 121 E. 3rd Ave.

# MUSICIAN HEADSHOTS

---



**Eric Hofmanis**



**Adam Pope**



**Debbie Horton**



**Brittany Grove**



**Jonathan Schneider**



**Peter Michaels, JR.**

# ABOUT THE CONCERT

---

**JOHNNY CASH – THE OFFICIAL CONCERT EXPERIENCE** brings songs and stories from the “Man in Black” to the stage in a way that audiences haven’t seen or heard before. With video of Johnny from episodes of The Johnny Cash TV Show projected on a screen above the stage, a live band and singers will accompany him in perfect sync. This concert experience will showcase iconic performances from the TV show and highlight the spirit of the legend by revisiting some of his memorable words and anecdotes. Cash will perform some of his biggest hits, including “Folsom Prison Blues,” “Ring of Fire,” and “I Walk the Line,” and share stories of people he met along the way whose causes he championed – the working man from all walks of life. Plus, onstage male and female singers will split vocal duties performing their own takes on Cash hits. The music never stops in this concert event!



**Yakima's Heritage Television Station**

**>JOHN KENNEDY O'CONNOR**  
NEWS DIRECTOR

**OKIMA ACTION NEWS**

**>ALAN SILLENCE**  
SPORTS



# WHO'S WHO

---

**ADAM POPE** (*Guitar/Vocals*) Adam Pope is an entertainer/songwriter born in Winston-Salem, NC. At the age of 15 Adam learned to play guitar and a few years later he purchased Johnny Cash's "San Quintin" album. Pope credits this album for changing his life. In early 2006, Adam moved to Nashville, TN to pursue a career in song writing and performing. He quickly met folks, got gigs, and put together a band. In 2007, Adam got a meeting with John Carter Cash, which resulted in Adam's original song "I Was The Train" being recorded and released by artist Vince Mira, whom John Carter was producing at the Cash Cabin Studio. Adam would go on to meet Johnny Cash's long-time drummer WS "Fluke" Holland and guitarist Bob Wooten. Months later "Fluke" joined Adam on a snare-drum at Nashville's Bluebird Cafe, and the two would work together often on shows throughout the next decade, including on a recording project together at Sun Studio in Memphis and on the "Music City Roots" show. Adam wrote a song with Robyn Collins called "Old Fashioned" that ended up being recorded and released by IBMA (multiple) award-winning Bluegrass duo, Darin and Brooke Aldridge. Their album "This Life We're Living" went #1 on the Bluegrass charts. The duo has performed "Old Fashioned" multiple times on the iconic Grand Ole Opry radio show. "Old Fashioned" was also featured on RFD TV's "My Bluegrass Story," on the *Mike Huckabee (TV) Show* (TBN), and more. As an artist Adam has hosted Ernest Tubb's "Midnight Jamboree" radio program (WSM radio) multiple times, he's been a regular "In the Round" at Nashville's Bluebird Cafe, and he has toured regularly, working stages across the US and Canada as an artist and in multiple bands, (also with Debbie Horton's "Branson On The Road" show.) With a Sponsorship from Music Ranch Montana, Adam and his wife Amy (along with their 2 kids) have traveled and performed as a duo from coast to coast across the US in recent years. The couple's song "Memories Worth Making" (penned

by Mike Astracan and Adam Pope) made it to the first-round ballot of Grammy Award consideration in 2023. Adam Pope is honored and thrilled to be a part of *Johnny Cash - The Official Concert Experience* and he looks forward to carrying on the sound of the Man in Black; the music that inspired Adam to chase his dreams at such an early age.

**DEBBIE HORTON** (*Electric Guitar*) The lead guitarist for the 2023/24 *Johnny Cash The Official Concert Experience* international tour, Debbie holds the distinction as the only woman to have played lead guitar for the Great Cash himself. Debbie first met Johnny Cash when she was a child, and the two maintained a friendship for more than twenty years. Photos of Debbie and Johnny, and a recording of them performing together, can be found on her website, [www.DebbieHorton.com](http://www.DebbieHorton.com). Debbie says of Johnny, "He was the most charismatic person I have ever met, but with the humblest way about him. What a blessing it was for me to have been around him as much as I was. This show is not a "tribute" show, but it is as close as you will ever get to attending a Johnny Cash concert, which was a truly magical experience. It is a thrill and honor to be a part of this talented team." Born in Newport News, Virginia, Debbie is a multi-talented musician, performer and show producer. She was the first female radio disk jockey, interviewer, and concert MC in Norfolk, working with people like Hank Williams, Jr. and Kenny Rogers. She is an accomplished songwriter whose songs have been recorded by the likes of rockabilly queen Wanda Jackson and Grand Ole Opry star, "Pretty Miss" Norma Jean. She hosted her own show at the Boxcar Willie Theater in Branson, Missouri, and has performed on the legendary Grand Ole Opry, the Louisiana Hayride, the Ernest Tubb Midnight Jamboree and recently had a show residency at the Opryland Hotel in Nashville. Debbie created the successful traveling show, *Branson on the Road* (seen nationally on RFD-TV), and for the last

# WE CAN'T STOP THE *Beat*



**NEWSTALK KIT**  
1280 AM 101.3 FM



## CAPITOL Friends

**BECOME  
A FRIEND**

Join other patrons with  
passion and experience the  
theatre beyond the stage.



# WHO'S WHO

---

20 years the production has been booked into performing arts centers, dinner theatres and historic venues throughout the US, Canada, and Europe.

**ERIC HOFMANIS** (*Guitar/Vocals*) A New York native, Eric has garnered an incredibly eclectic musical career. A vocalist and multi-instrumentalist whose worldwide experience spans studies in traditional Classical Guitar to decades of touring his own original experimental music. Though having strong ties to his Spanish and Latvian heritage, his musical and personal Wanderlust often leads him back to a lifelong obsession with the origins of American Country music. He found at a very young age that this unique blend of hymnals, folk tunes, and ballads naturally suited his deep baritone voice. Eric is also the singer and founder of "A Man Named Cash" - a touring group that pays tribute to the lifelong careers of Johnny Cash and June Carter. To be a part of *Johnny Cash - The Official Concert Experience* comes as an absolute honor for him.

**BRITTANY GROVE** (*Keyboards / BG's*) is a bi-coastal actor and musician based in New York City. She was granted the joyous opportunity to play Carole King in *Beautiful: The Carole King Musical* this past summer and recently traveled with Virgin Voyages performing the whimsical folk music of Pigpen Theatre Co.'s *Phantom Folktales*. Brittany also worked with Clothespin Ensemble in their staged presentation of *Paranoia: A New Musical* at Harrisburg Fringe Festival and can be seen in a leading role in the upcoming independent film *Bye 4 Now*. Additional past credits include *The Marvelous Wonderettes* and *The Winter Wonderettes* (Betty Jean), and *She Stoops to Conquer* (Kate Hardcastle). Everlasting thanks to her loving family for their support, and special thanks to Jim.

**JONATHAN SCHNEIDER** (*Drums / BG's*) is a professional drummer/percussionist born February

2001 and based out of New York City. He began drumming at the age of 8 with instructor and mentor Jim Toscano and would eventually study under Carl Allen, Dom Famularo, Dave Clive, Stephane Chamberland and Zack O'Farrill. Jonathan had the opportunity to play with the New York Pops at Carnegie Hall in middle school as part of the kids on stage program and attended and achieved high honors at Fiorello H. LaGuardia High School of Music & Arts. It was here, he would develop his love for music and explore many different styles such as Rock, Country, Jazz, and Latin. He would go on to play with many local bands and performed in several local productions such as *The Who's Tommy*, *Tick Tick Boom*, *Grease* and perform several times in Havana, Cuba with the Fat Afro Latin Jazz Cats. After graduating from LaGuardia High School, Jon attended The City College of New York where he was a member of the Jazz Studies program directed by Steve Wilson. This is where he furthered his skill sets under his mentors Carl Allen and Adam Cruz and went on to lead his first jazz trio: Jazz Division. Jon has always been extremely focused and consistently works on his craft and in December 2022 Jonathan earned his Bachelor of Music in Jazz performance. He currently performs throughout New York City and is known for having strong versatility, creativity, musicality, and passion.

**PETER MICHAELS, JR.** (*Bass Guitar / BG's*) is a multi-instrumentalist, songwriter, and producer from the NYC area making his touring debut playing bass for the *Johnny Cash Concert Experience*. A former student at the New School for Jazz, Peter's musical training is diverse and deep-rooted, playing in local theatre productions as a pit musician as well as in numerous bands around the NYC area. Along with performing, Peter is a prolific composer, releasing music on platforms since 2018, his latest album being a quirky release titled "Angry Oranges for Lunch".

**BRAVO**   
**BRAVO**   
**BRAVO** 



**noel**



***Enthusiastic  
Supporters of the Arts***

# WHO'S WHO

---

**QUATRO ENTERTAINMENT** produces live entertainment and promotes national Broadway touring shows. With offices in Calgary and Victoria they present hundreds of events across North America each year. Recent Broadway touring shows include: *Dirty Dancing*, *Kinky Boots*, *Rock of Ages* and *The Illusionists*. Quatro co-produces *Johnny Cash - The Official Concert Experience*, *The Simon & Garfunkel Story*, *The British Invasion*, *The Life and Music of George Michael* as well as offering General Management services for North American tours.

**GEALIVE** Since its inception in 2003, GEALive has produced and delivered live entertainment projects in over 40 countries worldwide. Many of the productions and artists that the company started working with in its early years are still part of its diversified portfolio today. In its early years GEALive mainly acted as a producer of international theatrical tours for titles such as *De La Guarda*, *Cirque Mechanics Bounce*, *Fuego! - The Spanish Dance Spectacular*, *The Official West End Production of the Blues Brothers*, *Hair - The Musical* and the massively successful French rock-opera *Notre Dame De Paris*. The cooperation with the late Maestro Ennio Morricone, which began in 2012 and the phenomenal success that followed, saw a shift in the company's focus to film music as a genre. In recent years GEALive has produced and still produces touring live screenings with orchestra and choirs of major motion pictures such as *The Godfather*, *Titanic*, *La La Land* (Germany), *The Hunger Games* and *Paddington*. In later years, GEALive produced the first ever concert tour of Hollywood composer James Newton Howard, which toured 15 European countries. The company also put together the first ever live tour of legendary music producer and pioneer of electronic dance music Giorgio Moroder and outside the realm of film music, GEALive partnered with Graceland and Sony Music Entertainment on producing *Elvis Live on Screen*,

which was hosted by Priscilla Presley. GEALive is currently producing the tours of *Dirty Dancing in Concert*, *Space Station Earth*, *Exhibition Imagine Monet*, *Ennio Morricone - The Official Concert Celebration* and *Our Planet* for 2023, with more live entertainment coming soon.

## **MAPLE TREE ENTERTAINMENT (Producer)**

Headed by Dean Elliott, Maple Tree Entertainment Ltd is a theatrical production company that specialize in creating, presenting and producing high quality music, drama and musicals both in the UK and across the world. Maple Tree Entertainment's flagship show *The Simon & Garfunkel Story* has been seen by hundreds of thousands of people across the world and is still today the leading theatrical show concerning *Simon & Garfunkel*. The company is committed to extremely high quality work and will always have the satisfaction of the audience as its main driving goal.

**SANDBOX SUCCESSION** a division of Sandbox Entertainment, provides comprehensive estate management services in all areas, with a focus on name and likeness licensing. Led by Josh Matas, President, the company's mission is to provide best-in-class partnerships and strategic planning to further the sustainability and preservation of our client's legacy. The division's full scope of services includes brand development and partnerships, merchandising and licensing, hospitality, exhibitions, live performances, and entertainment development across film, television, music, content, gaming, and books.



# JOHNNY CASH MUSEUM

119 3RD AVE S. NASHVILLE, TN | CASHMUSEUM.COM



*Don't Miss* **JOHNNY CASH'S BAR & BBQ**  
**FOOD, DRINKS & DAILY LIVE MUSIC**  
**RIGHT NEXT DOOR!**

121 3RD AVE S. NASHVILLE, TN | CASHBARANDBBQ.COM

# Proudly Supporting the Arts in Yakima Since 1981



**ABEYTA  
NELSON**  
INJURY LAW

[abeytanelson.com](http://abeytanelson.com)



## Our Mission Is to Increase Our Clients' Wealth

**TIETON**   
Capital Management™

*Proudly Supporting  
Yakima Valley's Arts*

[TietonCapital.com](http://TietonCapital.com)



# Contributors

We gratefully acknowledge the contributions from donors to our Annual Fund Drive. That help make all our Capitol Theatre programs possible. This list represents donations received April 1, 2022 to September 30, 2023.

## Presidents' Club

### (\$5,000 or more)

Carolyn & Red Ramsey  
Blaine & Preciosa Tamaki Foundation  
The Smith Family Fund  
The Moen Family  
Connie & Joe Farina  
Janie & Clifford Plath Charitable Fund  
Brig & Susie Temple

## Directors' Club

### (\$2,500 - \$4,999)

Elisabeth Kuhr & Lloyd Crabtree  
Debra & Craig McCown  
Al Fischer & Charlie Robin  
John & Nancy Rossmeissl  
Tony E. Sloan  
Jerry & Dona Thompson

## Producers' Club

### (\$1,000 - \$2,499)

Anonymous  
Alegria & Co PS  
Alliant  
Mark & Debbi Baldwin  
Rick & Linda Beck  
Terry & Jennifer Bliesner  
Connie & Jack Bloxom  
Greta Bryan  
Columbia Reach Pack  
Bill Dezellem  
Jim Fitch  
Rob Gallion & Karen Davis  
Cherie L Hanses Family Fund  
Eric & JoAnne Hanses  
Harry & Jackie Helliesen  
Jenny Hunter  
Karen Hyatt  
Royal & Kay Keith  
Neal Lessenger  
Betty Lewis  
Peggy Lewis Fund  
Greg & Jan Luring  
Stan & Pam Martinkus  
The McDowell Family  
Brendan & Aileen Monahan

Donna Moultray

Mike & Jennifer Norton  
Doris O'Connor  
Jocelyn & Manuel Pedrosa  
Rick & Mary Jo Pinnell  
Julie & Soren Rottman  
Chris & Susan Saunders  
Sharon Sauve  
Ken & Sharon Smith  
Matt & Anne Tweedy  
Gail Weaver  
Mina Worthington

## Sustainers

### (\$500 - \$999)

Nancy Abbenhaus  
Ben & Leanne Antonio  
Susie Ball  
Greg & Dottie Berndt  
Dr. John & Karen Boucher  
Lori & Mark Cleveland  
Rick Fairbrook & Gay Scott  
Charles Forster & Joan Jacobs  
Eric & Nancy Gustafson  
William & Jean Halpin  
Doyle Hardy & April Yates Hardy  
Virginia S. Hislop  
Dennis & Donna Hogenson  
Greg Huefner & Lisa Wallace  
Peak Performance Sport & Spine  
Addy Logsdon Consulting  
Duane & Kirsten Monick  
Shannon & Phil Moyer  
Kelly & Mary Ann Murray  
Toni & Garth Newman  
Evelyn Paulsen  
Maryellen Reinhart  
Jim & Barbara Riley  
Christian & Janet Schlect  
Becky & Larry Scholl  
Jeff & Lorita Stohr  
Roger & Betty Strand  
Martin & Priti Streich  
Terry & Sharon Truhler  
George & Mavis Velikanje

## Patrons

### (\$250 - \$499)

Anonymous  
Timothy & Sonja Alexander  
Ruth Ann Allen  
The Allred's  
Jared & Cheyenne Ammerman  
Susan Arb  
Janet & Brian Beck  
*"In honor of Sandy Williams"*  
Phillip & Marilyn Bird  
Matthew Bogoyas  
Ed & Gail Boob  
Michael & Lynn Brant  
Bill & Ina Bush  
Lee & Judith Callarman  
David Carlson  
Laura Terrazas & Michael Chandler  
Linda T Clark  
Pam Cleaver  
Sheri-Lou Creson  
*"In honor of Monica Stannard"*  
The Crockett Family  
Julie & Dennis Dean  
Sonja Dodge  
Bill & Jan Drenguis  
Sue & Kailan Dunn  
Betty L Elder  
Dana Eliason  
Aaron & Sammi Erickson  
Jill & Joe Falk  
Alice Faringer  
Carter & Linda Fjeld  
Cathy Forenpohar  
Priscilla & Steve Forney  
Charles Forster & Joan Jacobs  
Bunker & Larry Frank  
William Frodsham  
John & Stephanie Funk  
Ashley Gamache  
Craig & Suzanne Garrison  
Bill & Lynn Gilmore  
Mary & Karl Graf  
Kristine Grelish  
Mike Grigsby  
Joe & Ann Hall

Stephanie Hansen  
 David & Cindy Hargreaves  
 Robert Harrison  
 Susan & Roger Head  
 Harlan & Laura Hefner  
 Pam & John Henderson  
 Tom & Terrie Hinman  
 Ben & Ann Hittle  
 Kevin & Heather Hudson  
 Mrs. Nina Johnson  
 Portia Jones  
 Randy & Michelle Juette  
 Fred & Amy Karau  
 KDA Architecture  
 Brian & Kristen Kegley  
 Linda Kerslake  
 Corwin & Marianne King  
 Beth Klingele  
 Dr Akira Kobayashi  
 Adrienne Landin-Simond  
 Tom Boyd & Becky Lang-Boyd  
 Mel & Sheila Leskinen  
 Jeff & Teresa Louman  
 David & Lindsay Mack  
 Amy Maib  
 Kay Maletta  
 Nancy & Russell Mazzola  
 Jerry & Philene McDonald  
 Judith Meloy  
 Sandie & Ray Menard  
 Eula Miller  
 Rich & Dee Ann Millet  
 Dr Margaret Morelan  
 Sarah & Matt Morgan  
 Betty Jo Murray  
 Suzan Nettleship  
 Richard Nicksic & Cheryl LaFlamme  
 Nieto & Follansbee Family  
 Carson & Dorothy Olafson  
 Greg & Kathleen Paganelli  
 Treasa & Paul Palmer  
 Doug & Darlene Picatti  
 Stanley S. & Karen A. Pratt  
 Bob & Brenda Price  
 David & Purna Rankin  
*In honor of Virginia Gilbert*

Beth Richardson  
 Linda Ridings  
 Ron & Diann Rockstrom  
 Kimberly & David Ruck  
 Todd Samuel  
 Paul & Terri Schaake  
 Kenneth & Sylvia Severn  
 Morris & Donna Shore  
 Kent & Chris Smith  
 Patrick & Colleen Smith  
 Joy Stenehjerm  
 Mary Stephenson  
 Dr. Tamera Schille Straub & Dr. Tim Straub  
 Marv Swainson  
 Angela Sybouts  
 Kristy Tackett  
 Hilary Tanneberg  
 Bette Taylor  
 Marsha & Keith Therrien  
 Paul & Karen Tompkins  
 Sally Tonkin & Casey Corr  
 Jeff & Diane Trammell  
 Christy Bracewell Trotter  
 Richard & Pat Twiss  
 Nick & Mindy Udell  
 Robin Walker  
 Carol West

### **Curtain Raisers (\$100 - \$249)**

Gloria Anderson  
 John Baule  
 Ryan & Robin Beckett  
 Mary Beddeson  
 Barry Bernfeld  
 Sheri & Mike Brockway  
 Mr Courtnay Brost  
 Richard & Gail Brown  
 Sarah Brown  
 Effie Burton  
 Michael & Cheryl Bush  
 Margie Campbell  
 Patrick & Salie Cockrill  
 Sheldon Coleman  
 John & Patrice Cornelius

Reesha & Willow Cosby  
 Delores Desserault  
 Patty Dion  
 Victor & Julia Epperly  
 Kathy Erickson  
 Kathleen Fletcher  
 Victoria Flower  
 Jeannie & Jim Grippin  
 Norma Haney  
 Will & Julie Harris  
 Mike Hoge  
 Don & Mary-Jane Hovis  
 Al & Brenda Hubert  
 Tom & Cathy Kehm  
 Laura Klein  
 Elise & Thom Kokenge  
 Jeremy Loyd  
 Janis Luvaas  
 Kathleen McCarthy  
 Mike McCloskey  
 Curt McFarland  
 Jerry & Linda Monroe  
 Jim & Sherri Moon  
 Kristin Morrison  
 Matt & Joy Petersen  
 Christine Poplaski  
 Linda & Bryan Powell  
 Keith & Sharon Qunell  
 Brian & Tammy Regimbal  
 Maira Richardson  
 Kathy & Nick Schultz  
 Sally Simon  
 Kimberly Starr & LJ Da Corsi  
 Kenneth & Millie Stenehjerm  
 Judi Stocker  
 Ann Tritz  
 Virgil & Selma Umbarger  
 Doris W. Unruh  
 Darla Van Corbach  
 Robert & Leslie Wahl

In memory of: Rick Brown, Hal Bryan, Charlie O'Connor, Sally F Fitch, Marie Halverson, Tom Hanses, Dave Murray, Karen Sloan, Martha Stadelman.



# RED & CAROLYN RAMSEY



GAY DORSEY &  
MIKE POPPOFF



The Capitol Theatre Committee wishes to honor our corporate underwriters for their community leadership and commitment to our Theatre and its role in the quality-of-life of our valley.