

CAPITOL
THEATRE  YAKIMA

RED & CAROLYN
RAMSEY



**THE
BUDDY
HOLLY
STORY**

 **Best**
CAPITOL BEST SERIES

 **KAPUZA
LIGHT**
ACCIDENT INJURY LAWYERS

 **pepsi**

 **HAAS**



BOARD OF DIRECTORS

Michael Moen - Chair
JoAnne Hanses - Past-Chair
Kelly Murray - Secretary
Bill Dezelle - Treasurer
Reesha Cosby
Erika Doré
Dana Eliason

Aaron Erickson
Elizabeth Hargrave
David Mack
Gabriel Muñoz
Ozzie Park
Jocelyn Pedrosa
Julie Rottman

Eric Silvers
Hilary Tanneberg
Susie Temple
Laura Terrazas
Valerie Woerner
Janice Deccio - Ex-Officio

CAPITOL THEATRE SUPPORT TEAM

Charlie Robin - CEO
Jed Gibbs - Graphic Designer
Cat McMillen - Patron Services Manager
Genipher Messer - Capitol Friends Coordinator
Brian Palandri - Technical Director
Carol West - Director of Finance

THEATRE INFORMATION

ARRIVAL TIME

The Capitol Theatre typically opens 30 minutes prior to performance.

LOST AND FOUND

Located in the Capitol Theatre Box Office. Check with an usher or call the Box Office.

REFRESHMENTS

Beer, wine, soda, and water served in the Capitol Theatre's Lower Lobby and Mezzanine starting before the show until end of intermission. Enjoy your drink inside the theatre with our reusable house cup.

ACCESSIBILITY

RESTROOMS

Located in the Lower Lobby and on the Mezzanine.

ACCESSIBLE ELEVATORS

Available for travel between the Orchestra Level and the Lower Lobby in the Capitol Theatre.

FREE LISTENING SYSTEMS

Available for hearing impaired patrons (call the Box Office for more information).

ACCESSIBLE SEATING

Available on the Capitol's Orchestra Level.

BOX OFFICE

☎ 509.853.ARTS (2787)

🌐 www.capitoltheatre.org

🕒 M-F: 11a-4p • Show Days: 11a-showtime

📍 19 S 3rd St, Yakima, WA 98901

ADMINISTRATION OFFICE

☎ 509.853.8000

🕒 M-F: 9a-5p

📍 402 E Yakima Ave suite 777, Yakima, WA 98901

WARNING: The photographing or sound recording of any performance or the possession of any such device inside this theatre, without written permission of the management, is prohibited by law.

The Washington State Clean Indoor Air Act prohibits smoking in the facility.

RED & CAROLYN
RAMSEY



— PRESENTS THIS CAPITOL THEATRE COMMITTEE ENGAGEMENT —

GFour Productions, LLC
By Arrangement with Alan Janes for Buddy Worldwide Limited

Present

Buddy

The BUDDY HOLLY Story

WRITTEN BY
Alan Janes

FEATURING
ANDREW HARVEY

WITH
STEPHEN BLAUCH MARYANN DIPIETRO CALEB GRAHAM
HUNTER HENRICKSON LIZ NEITGE MATT SMOLKO
HANNAH-KATHRYN "HK" WALL DAVID COCHISE WILLIAMS NATHAN WRIGHT

SCENIC DESIGN
Zach Hoover

LIGHTING DESIGN
Jackson Gray

SOUND DESIGN
Jacob Boshears

GENERAL MANAGEMENT TECHNICAL DIRECTOR CASTING DIRECTOR PRODUCTION SUPERVISOR
GFour Productions Jacob Boshears Karie Koppel Caleb Spivey

PRODUCTION MANAGER PRODUCTION STAGE MANAGER ASSISTANT STAGE MANAGER
Samantha Rudy John Findlay Aaron Gibson

DIRECTOR/MUSICAL DIRECTOR
Angela C. Howell

For licensing information visit buddythemusical.com
LICENSING MANAGER
Rick Thorne



BUDDY - THE BUDDY HOLLY STORY is booked exclusively by
Columbia Artists Theatricals. www.ColumbiaArtistsTheatricals.com

SYNOPSIS OF SCENES

ACT ONE

Grand Bowl, Lubbock, Texas
Decca Recording Studios, Nashville
KDAV Radio Studio, Lubbock
NorVajak Studios, Clovis, New Mexico
Apollo Theater, Harlem, New York

ACT TWO

Music Publisher's Office, New York
Central Park, New York
NorVajak Studios, Clovis, New Mexico
Buddy & Maria Elena's Apartment, New York
Backstage Surf Ballroom, Clear Lake, Iowa
Clear Lake Concert

THERE WILL BE ONE 15-MINUTE INTERMISSION.

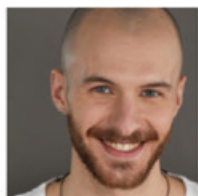
The use of any recording device, either audio or video, and the taking of photographs, either with or without flash, is strictly prohibited. Please turn off all electronic devices such as cellular phones, pagers and watches.

Buddy – The Buddy Holly Story: Music Credits

Flower Of My Heart.....	Holly House Inc.
Ready Teddy.....	Unichappell Music Inc.
That's All Right.....	Unichappell Music Inc.
Changing All Those Changes.....	Cedarwood Publishing Co.
That'll Be The Day.....	MPL Comm. Inc. MPL/Wren
Blue Days Black Nights.....	Unichappell Music Inc.
Rock Around With Ollie Vee.....	Hill And Range Songs Inc.
Looking For Someone To Love.....	MPL Comm. Inc. MPL/Wren
Mailman Bring Me No More.....	Southern Music Publishing Co. /Beinstock Publishing
Maybe Baby.....	MPL Comm. Inc. MPL/Wren
Everyday.....	Southern Music Publishing Co.
Shout.....	Sony/ATV
Not Fade Away.....	MPL Comm. Inc. MPL/Wren
Peggy Sue.....	MPL Comm. Inc. MPL/Wren
Words Of Love.....	MPL Comm. Inc.
Oh Boy.....	Wren Music Co. c/o MPL
Listen To Me.....	MPL Comm. Inc. MPL/Wren
Well Alright.....	MPL Comm. Inc. MPL/Wren
It's So Easy To Fall In Love.....	MPL Comm. Inc. MPL/Wren
Think It Over.....	Cedarwood Publishing Co. /Southern Music Publishing Co.
When You Ask About Love.....	Acuff Rose Music Inc.
True Love Ways.....	MPL Comm. Inc. MPL/Wren
A Teenager In Love.....	Unichappell Music Inc.
Why Do Fools.....	Windswept Pacific Ent.
Chantilly Lace.....	Donald Daily, Glad Music Co. / Fort Knox Music Inc. / Trio Music Company Inc.
Peggy Sue Got Married.....	Southern Music Publishing Co.
Heartbeat.....	Wren Music Co. c/o MPL
Raining In My Heart.....	House Of Bryant Pubs. Inc.
It Doesn't Matter Anymore.....	Management Agency
Rave On.....	Wren Music Co. c/o MPL
Johnny B Goode.....	Isalee Music Co.

All other songs, arrangements and incidental music by Paul Jury

WHO'S WHO FEATURING



**ANDREW
HARVEY**

WITH



**STEPHEN
BLAUCH**



**MARYANN
DIPIETRO**



**CALEB
GRAHAM**



**HUNTER
HENRICKSON**



**LIZ
NEITTE**



**MATT
SMOLKO**



**HANNAH-KATHRYN
"HK" WALL**



**DAVID COCHISE
WILLIAMS**



**NATHAN
WRIGHT**

WE CAN'T STOP THE *Beat*

KATS
YAKIMA'S ROCK STATION
94.5

NEWSTALK
1280 AM

KIT

92.9 **THE BULL**
#1 FOR NEW COUNTRY

107.3
KFFM
Yakima's #1 Hit Music Station!

townsquare
media yakima

WHO'S WHO

ANDREW HARVEY (*Buddy Holly*) is an actor, singer/songwriter and musician based in New York City, where he lives surrounded by various string instruments and houseplants. A recent college graduate and long-time music nerd, Andrew is thrilled to be playing the role of Buddy for his third time professionally. IMMENSE thanks to Mom, Dad, Mattie, Allister, Sam, Renee, Joe and of course, Mr. Marshall Carby for all your love and continued support! Regional Credits include *Oklahoma!*, Ernie in *Ring of Fire* and Buddy Holly in *Buddy - The Buddy Holly Story*. IG: @andrewharvey_official

STEPHEN BLAUCH (*Jerry Allison/Ensemble*) is thrilled to be making his North American tour debut with *Buddy - The Buddy Holly Story*. Recent credits: Dennis Sanders in *Smoke on the Mountain* (Hackmatack Playhouse & OST), Melchior in *Spring Awakening* (Short North Stage), and Freddy in *Carrie* (Columbus Immersive Theater). Proud alumnus of Otterbein's MT & SOC Class of 2022. Many thanks to Avalon Artists Group. Much love to his friends and family for being unwavering supporters of his dreams. Website: www.StephenBlauch.com

MARYANN DIPIETRO (*Vi Petty/Ensemble*) is excited to be performing on her second national tour as Vi! A few favorite performances: *I Love You, You're Perfect, Now Change*; Maria in *The Sound of Music*; the national tour of *An Irish Christmas* as seen on PBS; Donna in *Mamma Mia!* on both coasts; *Company*; *Grease*; *Jesus Christ Superstar*; and *A Christmas Carol*. In addition to stage, MaryAnn can be seen on TV, film and in commercials. MaryAnn is a pianist, improv/sketch performer and a writer. She is a graduate of The Ohio State University. Thanks to the cast, crew, friends, family, Joe and Rocco! @maryannndipietro

CALEB GRAHAM (*Nikki Sullivan/Ensemble*) This is Caleb's national tour debut. Originally from the Baltimore, Maryland area, Caleb is now based in New York City. When he is not acting, he is writing and recording his own music. His previous credits include Ernst Ludwig in *Cabaret* and most recently Moritz Stiefel in *Spring Awakening* (Milton Theatre Company).

HUNTER HENRICKSON (*Joe B. Mauldin/Ensemble*) is thrilled to be returning to the touring cast of *Buddy - The Buddy Holly Story*! He gives much love to his friends and family that helped him get to where he is today and who continue to push and inspire him to continue making music. Previous credits include: Michael in *Ring of Fire*, Jesus in *Jesus Christ Superstar*, Richard Hannay in *The 39 Steps*, and Curly in *Oklahoma!*. www.HunterHenrickson.com

LIZ NEITGE (*Maria Elena/Ensemble*) is a Brooklyn-based actor and thrilled to be touring with *Buddy - The Buddy Holly Story*! Recent credits include *West Side Story* (Seacoast Repertory) and *El Otro Oz* (Forestburgh Playhouse). Outside of performing, Liz is an avid cyclist and rides with a WTFNB bike group all over New York City. Many thanks to Sav, Figaro and Mom. @lizneitge

MATT SMOLKO (*Norman Petty/Ensemble*) Originally from Pennsylvania, Matt has performed all over the country as a songwriter, singer, actor and musician. Debut single "Kickin Up Dust" streaming everywhere. Excited to be joining the *Buddy - The Buddy Holly Story* family and traveling the country with these talented folks. Thanks to Angela, Karie, and GFour for this amazing opportunity! www.MattSmolko.com

HANNAH-KATHRYN "HK" WALL (*Female Apollo/Ensemble*) is excited to make her national tour debut! HK, a recent graduate of Western Carolina University, just wrapped a contract with Pendragon Theatre in Saranac Lake, NY! She starred as Olive in *The 25th Annual Putnam Co. Spelling Bee*, Kim in *The Woods* and was the director of *Frozen Jr.* She would like to thank God, her family, Mikey Nagy and The Collective Talent, her friends, and mentors for all their continued support!

DAVID COCHISE WILLIAMS (*Ritchie Valens/Ensemble*) is making his second contribution to this amazing show playing Ritchie Valens, along with other characters! David really loves music of all kinds, and has recently posted his own music as well on his Instagram @Cochise_thaKing555. David has been in

shows such as *West Side Story*, *A Chorus Line*, *Chicago*, *Mamma Mia!* etc. It's been a hard year for all of us, and David can't wait to just spread some love through his craft!

NATHAN WRIGHT (*Hipockets/Big Bopper/Ensemble*) National tour: JoJo the Whale in *A Bronx Tale*. Regional: *Mr. Holland's Opus*, JoJo the Whale in *A Bronx Tale*, Roger in *Grease*, *The Drowsy Chaparrone*, Mitch in *The 25th Annual Putnam County Spelling Bee*, and Lippo Fiorentino in *Street Scene*. Nathan also serves as the tenor section leader for St. Patrick's Cathedral of NYC. Thank you to mom and dad for everything. Eternally grateful to Brian at Hell's Kitchen Agency.

ALAN JANES (*Writer/Producer*) In a career spanning 50 years, Alan has written and produced extensively for television, films and theatre. Alan wrote and produced the soul musical *125th Street*, and wrote and produced the musical *Jailhouse Rock*, based on the Elvis Presley film, both of which ran in London's West End. In 1989, Alan wrote *Buddy – The Buddy Holly Story* which was presented in the West End and ran for almost 6,000 performances and over 14 years. *Buddy* has toured the UK for 28 out of the last 32 years playing over 4,700 performances, and the show has become a worldwide phenomenon playing Broadway and US national tours, Canada, Australia, New Zealand, Germany, Sweden, South Africa, Ireland, Japan, Singapore, Holland, Denmark, Norway, Finland and Austria. Alan was nominated for an Olivier Award for Best Musical, and internationally *Buddy* has received many awards and nominations including a Tony®.

ANGELA C. HOWELL (*Director/Music Director/Choreographer*) Directing Highlights: *Lucky Stiff* (West End Theatre, NYC), *Peter Pan* (Riverdale Summerstage), Alabama Shakespeare Summer Intensive, *Angela & Friends* benefit series (GoodStuff). Musical Director: Yale Summer Series, Royal Academy of Dramatic Arts (NYC), Westchester Broadway Theatre, North Carolina Theatre (Broadway World nomination), Engeman Theater, Music Theatre of Connecticut, Circle in the Square Theatre School. This is Angela's ninth full production of *Buddy - The Buddy Holly Story* (Broadway Tour, Walnut St. Theatre, Tuacahn, etc). In 2018 she had three songs simultaneously in the top 100 Adult Contemporary charts. "There's Nothin' I Don't Love" reached #8 in America. *Camille 101*, her latest studio album, was released in 2021. Angela has toured extensively and is ever-thankful to create art: Lincoln Center, York Theatre, FST, GoodspeedOH, Arkansas Rep, CT Rep, NYC Writers Summit, Capital Theatre, Black Swamp Festival, Birdland, Playwrights Horizons, NYC Town Hall to name a few. BIG thanks to Karie, Caleb, Kim & the GFour team for all their support. This one is for Barry Katz. www.AngelaCHowell.com

CALEB SPIVEY (*Production Supervisor*) joined the GFour Productions team in Fall 2018 as a production stage manager for *Menopause The Musical®* and hasn't looked back since. Along with *Menopause The Musical®*, Caleb has worked Off-Broadway, National Broadway Tours, regionally, theme parks, and much more! Some favorite shows include *Cabaret* (National Tour), *Finding Neverland* (National Tour) and *The Producers*. Caleb would like to thank the producers and management team of GFour Productions for giving him so many opportunities. He also wants to thank his husband, Timothy, for supporting and loving him through this crazy career!

JACOB BOSHEARS (*Sound Designer/Technical Director*) is thrilled to be a member of the GFour Productions' Production Team. He has been touring with *Menopause The Musical®* since 2017 and has loved every second of it. In addition to touring with *Menopause The Musical®* and *Funny Women Of A Certain Age®*, Jake has freelanced as a Sound and Lighting Designer for various venues throughout the Midwest. He has had the pleasure of working at the Al Hirschfeld Theatre on Broadway, working on the Audio team for *Kinky Boots* and the Electrics team for *Moulin Rouge*. He loves working on any technical aspect of a production. Outside of theatre, he enjoys spending time with his beautiful wife, Tasha, and their two perfect dogs, Mia and Sami, as well as playing video games and spending time outside.

SAMANTHA RUDY (*Production Manager*) is so excited to be bringing *Buddy - The Buddy Holly Story* back on the road! Select regional credits: The Barn Theatre and School (Technical Director/Props Designer), The Sarasota Opera (Props Artisan), The Asolo (Audio Assistant). Touring Credits: *Once* (Apex Touring 2019 Head Props/ASM) and *Buddy - The Buddy Holly Story* (Boebe Productions 2020/2021 PSM/PMI). Thank you Trev, Dad, and Mom for your unconditional love and support. Sam's portfolio can be found at www.SamanthaHallaPropsAndDesign.net

JOHN FINDLAY (*Production Stage Manager*) Graduate of Plymouth State University, NH. B.A. Theatre Arts, Focus in Lighting Design and Acting. Touring: *Oedipus*, *Buddy - The Buddy Holly Story* (2020, 2021) Regional: *Evita*, *La Cage Aux Folles*, *Show Boat*, *Newsies* (Interlakes Theatre), *The Mountaintop*, *Betrayal*, *Dani Girl*, *Hooligans and Convicts* (The Winnepesaukee Playhouse), *Noises Off*, *Deathtrap* (The Cape Playhouse).

JACKSON GRAY (*Lighting Designer/Master Electrician*) is a Lighting Design graduate of the University of Alabama in Huntsville. He has spent the past year as the Lighting Director at The Buddy Holly Hall in Lubbock, TX where he has designed a multitude of concerts, plays, and dance shows. Aside from lighting design, he enjoys tennis, chess and is a long-standing member of the Jelly of the Month Club. You can find more of his work at jacksonbgraylighting.com

BRIANNA HUNTER (*Wardrobe Supervisor*) went to Texas Wesleyan University in Fort Worth where she graduated with a BFA in Design Technology in 2020. She is very excited to work wardrobe for *Buddy - The Buddy Holly Story*! Some of her prior credits include *Summer: The Donna Summer Musical* tour, House of Spirits Dallas, and working in her local regional theaters. Brianna loves to practice her painting skills when she's not on tour.

JACOB LEVITIN (*Audio Supervisor*) has been living and breathing sound and music for as long as he can remember. Recently, he was Sound Designer/Supervisor in-residence for the Cape Playhouse, and A1 for *Islander* Off-Broadway. Jake also works on Broadway and tours as a music technology specialist with Midiomatic LLC. IG: @05_bottlebell

AARON GIBSON (*Assistant Stage Manager/Props*) is overwhelmed with excitement to be joining his first national tour! Recent local design credits include *I and You*, *Gruesome Playground Injuries*, *Beauty and the Beast*, and *Peter Pan*. Aaron received his Bachelor's and Master's degrees in Technical Theatre from Texas A & M University – Commerce. Love & thanks for all of the support throughout this journey! "It was only in the theatre that I lived" – Oscar Wilde

KARIE KOPPEL (*Karie Koppel, Casting Director*) Off-Broadway: *Queens Girl In The World*, Eve Ensler's *Fruit Trilogy*, *The Gentleman Caller*, *The Boy Who Danced On Air*, and *Mother of Invention*. Regionally she has worked with Denver Center Theatre, Geva Theatre, Cleveland Playhouse, Cape Playhouse, Actors Theatre of Louisville, Arena Stage, The Magic Theatre, Milwaukee Repertory Theatre, Northern Stage, Arizona Theatre Company, Syracuse Stage, Bucks County Playhouse, Oregon Shakespeare Festival, and Alabama Shakespeare Festival. Feature Films include: *The Empath*, *Friends*, *First and Foremost*, *The House of Usher* and *The Visit*. For PBS: "Walter Winchell," "The Vote," "Charles M Russell," "Across The Pacific." Other recent projects include several industrials and independent features.

GFOUR PRODUCTIONS (*Producer/General Management*) proudly produces some of the world's highest caliber shows, from Broadway to the West End. Current and recent Broadway productions and investments include: *The Book of Mormon*, *Six*, *Tina: The Tina Turner Musical*, *American Buffalo* starring Sam Rockwell, Laurence Fishburne and Darren Criss; the Tony Award®-nominated *Fiddler on the Roof* (U.S. Tour); and the international sensation *Menopause The Musical*® (U.S. Tour). Most recently, their West End hit *The Shark is Broken* made its North American debut in Toronto. Winners of more than 50 Tony Awards® for their productions including *Nine*, *La Cage Aux Folles*, *Matilda The Musical*, *Who's Afraid of Virginia Woolf?*, *The Inheritance*, and more. www.GFourProductions.com

Buddy

THE
BUDDY
HOLLY
STORY



SCAN HERE
WITH YOUR PHONE'S CAMERA
**FOR SHOW INFO,
CONTESTS, GIVEAWAYS,
& MORE!**



Providing our customers with only the highest quality foods, products and services for over 60 years.

IGA
Wray's
MARKET
YAKIMA'S FOOD STORE *fresh*

Chalet Place
Southgate Center
Meadowbrook Mall
Selah

www.wraysfoods.com

Buddy Worldwide Limited

Author Alan Janes
Producer Alan Janes
General Manager Richard Porter
Licensing Manager..... Rick Thorne

The BUDDY Touring Company

Producer/General Management.....GFour Productions
Director/Musical Director/Choreographer.....Angela Howell
Casting Director.....Karie Koppel
Production Supervisor..... Caleb Spivey
Sound Designer/Technical Director.....Jacob Boshears
Production Manager.....Samantha Rudy
Production Stage Manager.....John Findlay
Lighting Designer/Master Electrician.....Jackson Gray
Wardrobe Supervisor Brianna Hunter
Audio Supervisor.....Jacob Levitin
Assistant Stage Manager/Props.....Aaron Gibson
Scenic Designer.....Zach Hoover
TruckingShowtime Trucking, Waxahachie, TX



Winners of over
50 Tony Awards®

Founder/Chairman.....Kenneth Greenblatt
CEO/President..... Seth Greenleaf
CFOMaureen Portlock
Director of Operations and Production Kim Simari
Director of Sales and Marketing..... Ashley Dinges
Director of Casting.....Karie Koppel
Associate Director of Sales and Marketing Alyssa Holland
Technical Director..... Jacob Boshears
Production Manager..... Caleb Spivey
Marketing Coordinator..... Katherine Montgomery
Marketing Coordinator..... Lauren Mandras
Accountant.....Lerro & Chandross Victor Lerro
IP Counsel..... St. Onge, Steward, Johnston, & Reens LLC; Gene Winter/Jonathan Winter
Attorney Boies, Schiller & Flexner LLP; Stuart Singer/James Grippando
In House Counsel..... David Harris
Founder Kenneth & Sandi Greenblatt
Founder Alan & Kathi Glist

BUDDY – THE BUDDY HOLLY STORY is booked exclusively by Columbia Artists Theatricals.



BUDDY HOLLY

Charles Hardin Holley (September 7, 1936–February 3, 1959), better known as **Buddy Holly**, was an American singer, songwriter, and a pioneer of Rock and Roll. The change of spelling of Holley to Holly came about because of an error in a contract he was asked to sign, listing him as Buddy Holly. That spelling was then adopted for his professional career.



Holley was born in Lubbock, Texas. The Holleys were a musical family and as a young boy Holley learned to play the violin, piano and guitar. In the fall of 1949 he met Bob Montgomery at Hutchison Jr. High School. They shared a common interest in music, and soon teamed up to perform as the duo "Buddy and Bob." Initially influenced by bluegrass music, they sang harmony duets at local clubs and high school talent shows. Holley's big break came when they opened for Bill Haley and his Comets at a local rock show organized by Eddie Crandall who was also the manager for Marty Robbins. As a result of this performance, Holley was offered a contract with Decca Records to work alone. However, early success as a solo artist eluded him.

Back in Lubbock, Holley formed his own band, "The Crickets", and began making records at Norman Petty's studios in Clovis, New Mexico. Among the songs they recorded was "That'll Be The Day", which takes its title from a phrase which John Wayne's character says repeatedly in the movie, *The Searchers*. Norman had music industry contacts, and believing that "That'll Be The Day" would be a hit single, he contacted publishers and labels. Coral Records, a subsidiary of Decca, signed Buddy Holly and The Crickets. This put Buddy in the unusual position of having two record contracts at the same time. Before "That'll Be The Day" had its nationwide release and became a smash hit, Holley played lead guitar on the hit-single "Starlight", recorded in April 1957, featuring Jack Huddle.

Holly's music was sophisticated for its day, including the use of instruments considered novel for rock and roll, such as the celesta (heard on "Everyday"). Holly was an influential lead and rhythm guitarist, notably on songs such as "Peggy Sue" and "Not Fade Away". While Holly could pump out boy-loves-girl songs with the best of his contemporaries, other songs featured more sophisticated lyrics and more complex harmonies and melodies than had been previously shown in the genre.

Many of his songs feature a unique vocal "hiccup" technique, a clipped "uh" sound used to emphasize certain words in any given song, especially the rockers. Example, the start of the raucous number "Rave On": "We-UH-ell, the little things you say and do, make me want to be with you-UH-ou..."

Holly also managed to bridge some of the racial divide that punctuated rock, notably winning over an all-black audience when accidentally booked for New York's Apollo Theater (though, unlike the fictional portrayal in his movie biography, it took several performances for audiences to be convinced of his talents).

After the release of several highly successful songs, in March of 1958, he and the Crickets toured the United Kingdom. In the audience were teenagers named John Lennon and Paul McCartney, who later cited Holly as a primary influence (the band's name, The Beatles, was later chosen partly in homage to Holly's Crickets). The Beatles did a cover version of "Words Of Love" that was an almost perfect reproduction of Holly's version. The Rolling Stones did a cover of "Not Fade Away." The group, The Hollies were named in homage.

Holly's personal style, more controlled and cerebral than Elvis's and more youthful and innovative than the country and western stars of his day, would have an influence on youth culture on both sides of the Atlantic for decades to come, reflected particularly in the New Wave movement in artists such as Elvis Costello and Marshall Crenshaw, and earlier in folk rock bands like The Byrds and The Turtles.



He married Maria Elena Santiago on August 15, 1958. In 1959, Holly split with the Crickets and began a solo tour with other notable performers including Ritchie Valens and J.P. Richardson, "The Big Bopper". One audience member at the tour stop in Duluth, Minnesota, was a young Bobby Zimmerman who would later be known as Bob Dylan.

Following the February 2nd performance at the Surf Ballroom in Clear Lake, Iowa, the performers and their road crew drew straws to decide who would fly in the airplane, and who would ride in the unheated tour bus. The winners were Holly, Valens and Richardson. The four-passenger Beechcraft Bonanza took off into a blinding snow storm and crashed into Albert Juhl's corn field several miles after takeoff at 1.05 a.m. The crash killed Holly, Valens, Richardson, and pilot Roger Peterson, leaving Holly's pregnant bride, Maria Elena Holly, a widow. (She would miscarry soon after.) Funeral services were held at the Tabernacle Baptist Church in Lubbock, Texas, and Buddy Holly was interred in the City of Lubbock Cemetery.

Holly's headstone carries the correct spelling of his name, Buddy Holley. It also features a carving of his favorite guitar. Downtown Lubbock has a "walk of fame" with plaques to various area artists such as Mac Davis and Waylon Jennings, with a life-size statue of a guitar playing Buddy as its centerpiece.

The tragic plane crash inspired singer Don McLean's popular 1971 ballad "American Pie", and immortalized February 3rd as "The Day The Music Died". Contrary to popular myth, "American Pie" was *not* the name of the ill-fated airplane.

The Surf Ballroom, a popular and old-fashioned dance hall that dates to the height of Big Band Era, continues to put on shows, notably an annual Buddy Holly tribute on the anniversary of his last performances.



Hilton Garden Inn®

The show isn't over till you've eaten at the Hilton Garden Inn.



Stop by the renovated bar and grille at the Hilton Garden Inn—just one block from the Capitol Theatre. Enjoy fresh, locally-sourced food paired with beers and wines from around the Valley.

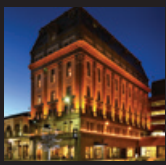
401 E Yakima Ave | (509) 454-1111 | yakima.hgi.com



HOTEL MAISON

TAPESTRY
COLLECTION
by Hilton™

Historic elegance with modern convenience



Supporting Yakima Arts, Culture, and History

thehotelmaison.com | 321 East Yakima Avenue | (509) 571-1900





BIG BOPPER

Jiles Perry Richardson, Jr. (October 24, 1930 - February 3, 1959), better known as **The Big Bopper** (but called **Jape** by friends) was a disc jockey who parlayed a big voice and exuberant personality into a career as an early rock and roll star. He is best known for his hit song "Chantilly Lace".



He was born in Sabine Pass, Texas, the oldest son of Jiles Perry, Sr. and Elise (Stalsby) Richardson. His father was an oil field worker and driller. He had two younger brothers, Cecil and James. Within a short time the family moved to Beaumont, Texas. He graduated from Beaumont High School in 1947 and was a member of the "Royal Purple" football team, wearing number "85" as a defensive lineman.

Richardson later studied law at Lamar College, and was a member of the band and chorus. During this time he worked part time at KTRM radio. On April 18, 1952, Richardson married Adrienne Joy Fryou from Montegut, Louisiana, and by 1955 he had joined the United States Army, where he spent two years as a radar instructor at Fort Bliss. Upon his discharge, he began working at KTRM radio, where he held down the "Dishwashers' Serenade" shift from 11 a.m. to 12:30 p.m., Monday through Friday.

One of the sponsors wanted Richardson for a new time slot and suggested a gimmick for the show. Richardson noticed all the college kids doing a dance called The Bop, so he decided to become known as "The Big Bopper!" He kicked off a new radio show from 3 to 6 p.m., and soon The Big Bopper became the station's program director.

In May of 1957, Jape Richardson broke the record for continuous on-the-air broadcasting by eight minutes. He went a total of five days, two hours and eight minutes, playing 1,821 records and taking showers during five-minute newscasts. During the marathon, he lost 35 pounds (16 kg). KTRM paid Richardson \$746.50 for his overtime and he quickly hit the sack for 20 hours.

Around this time, Richardson -- who played guitar-- started writing more songs. George Jones later recorded Richardson's "White Lightning", which became his first #1 country hit in 1959 (#73 on the pop charts). Richardson also wrote "Running Bear" for his friend from Port Arthur, Texas, Johnny Preston. Inspiration for the song came from Richardson's childhood memory of the Sabine river, where he heard stories about Indian tribes. Jape sang background on "Running Bear", but it wasn't released until September 1959, after his death. Within several months it went to #1.

The man who launched Richardson as a recording artist was Harold "Pappy" Dailey from Houston. Dailey was promotion director for Mercury and Starday records and signed Richardson to Mercury. Richardson's first single "Beggar To A King" had a country flavor, but failed to gain any chart action. He soon cut "Chantilly Lace" as "The Big Bopper" for Pappy Dailey's D label. Mercury bought the recording and released it during the summer of 1958. It reached 16 on the pop charts and spent 22 weeks on the national Top 40.

With the success of "Chantilly Lace," Richardson took some time off from KTRM radio and joined Buddy Holly and The Crickets, Ritchie Valens, and Dion & the Belmonts for a "Winter Dance Party" tour. On February 2, 1959, Buddy Holly chartered a Beechcraft Bonanza to take him and his new Crickets band (Tommy Allsup and Waylon Jennings) to Fargo, North Dakota. Richardson came down with the flu and didn't feel comfortable on the bus, so Waylon gave his plane seat to him. Valens had never flown on a small plane and requested Allsup's seat. They flipped a coin, and Valens called heads and won the toss.

In the early morning of February 3, following a February 2 performance at the Surf Ballroom in Clear Lake, Iowa, the small four-passenger Beechcraft Bonanza took off into a blinding snow storm and crashed into Albert Juhl's corn field several miles after takeoff at 1:05 a.m. The crash killed Holly, Valens, Richardson and pilot Roger Peterson. This event would become known as "The Day the Music Died".

At the time of his death, Richardson, 28, left behind his wife Adrienne Joy, four-year-old Debra Joy, and a baby son who was born after his death, Jay P. Richardson. Richardson had been building a recording studio in his home in Beaumont, Texas before that last tour and was also planning to invest in the ownership of a radio station. In addition, he had written twenty new songs with plans to record by himself and with other artists. Richardson was a well-loved figure who was known to care deeply about his family.

In 1988, Ken Paquette, a Wisconsin fan of the '50s era, erected a stainless steel monument depicting a steel guitar and a set of three records bearing the names of each of the three performers. It is located on private farmland, about one quarter mile west of the intersection of 315th Street and Gull Avenue, approximately eight miles north of Clear Lake. He also created a similar stainless steel monument to the three musicians near the Riverside Ballroom in Green Bay, Wisconsin. That memorial was unveiled on July 17, 2003.

The Big Bopper is fondly remembered not only for his distinctive singing and songwriting, but also as a humorist who combined the best elements of country, R&B and rock 'n' roll.





RITCHIE VALENS

Richard Steven Valenzuela (May 13, 1941–February 3, 1959), better known as **Ritchie Valens**, was a pioneer of rock and roll and, as a Mexican-American born in Los Angeles, California, became the first Hispanic rock and roll star.



Valens' hits included "Come On, Let's Go", "Donna", and "La Bamba"; the latter became the title of a 1987 movie about his life (see *La Bamba*), which introduced Lou Diamond Phillips as Ritchie and co-starred Esai Morales as his older half-brother Bob Morales. Valens was a pioneer of Hispanic rock and influenced the likes of Chris Montez and Carlos Santana.

In early 1959, Valens was traveling the Midwest on a multi-act rock and roll tour. In the early morning following a February 2nd performance at the Surf Ballroom in Clear Lake, Iowa, a small four-passenger Beechcraft Bonanza aircraft departed into a blinding snowstorm and crashed into Albert Juhl's cornfield several miles after takeoff at 1:05 a.m. The crash killed Valens, along with co-performers Buddy Holly, J.P. "The Big Bopper" Richardson, and the pilot Roger Peterson. This event inspired singer Don McLean's popular 1971 ballad "American Pie", and immortalized February 3rd as "The Day The Music Died".

Ritchie Valens is interred in the San Fernando Mission Cemetery in Mission Hills, California. He has a star on the Hollywood Walk of Fame at 6733 Hollywood Blvd. in Hollywood, California, and he was inducted into the Rock and Roll Hall of Fame in 2001.





**Dedicated to
Yakima's Capitol
Theatre**



ACCIDENT INJURY LAWYERS

- » car accidents
- » slip & falls
- » wrongful death

509-866-4166 | 3806 Tieton Drive, Yakima, WA
YakimaAccidentInjuryLawyers.com

Yakima's Heritage Television Station

> **JAKE TAYLOR**
NEWS DIRECTOR

 **ACTION NEWS**

> **ALAN SILENCE**
SPORTS



FACT NOT FICTION

**Some interesting facts about
*Buddy - The Buddy Holly Story***



- In total our Buddy Holly's have sung 17 songs, 246,921 times.
- 160,000 guitar strings have been replaced (81 miles) and over 176,000 plectrums used.
- Over 3,000 pairs of trousers have had to be replaced – due to Buddy knee-sliding across stages throughout the world – and 300 pairs of glasses!
- Over 30 tons of washing powder have been used by our Wardrobe Masters and Mistresses, as well as more than 2,000 gallons of fabric conditioner.
- 125,000 feet (23.67 miles) of guitar cable has been used and 2,715,108 radio mic batteries replaced!
- The trucks that are used to transport the show from venue to venue have now travelled approximately five times around the world!
- Over 3 million programmes have been sold.
- The performers have drunk over 95,000 gallons of bottled water. The beer intake has never been monitored!!
- Since *Buddy* first began there have been 23 actors playing the title role of Buddy in the West End, on Tour in the U.K. and on Broadway: Paul Hipp, Billy Geraghty, Joe Warren Davies, Ken Triwush, Stephen Gray, Chip Esten, Joe Lutton, Alex Bourne, Martin Fisher, Angus MacGregor, John Sheridan, Craig Urbani, Kevin Pallister, Robert Burke Warren, Klaus White, Van Zieler, Reuven Gershon, Edward Handoll, Elliot Harper, Dean Elliott, Matthew Wycliffe, Glen Joseph, and Oliver Seymour Marsh.
- The Cast album has received a Gold Disc and is 'Buddy' close to reaching Platinum!
- Throughout the world nine couples have met and married while working in the company and there have been 16 *Buddy* babies!



BUDDY U.K. HIT SINGLES

Date	Title	Chart Pos	No of Weeks
27 Sept '57	That'll Be The Day	1	14
6 Dec '57	Peggy Sue	6	17
27 Dec '57	Oh Boy	3	15
10 Jan '58	That'll Be The Day (re-entry)	9	1
14 March '58	Maybe Baby	4	10
25 July '58	Think It Over	11	7
14 March '58	Listen To Me	16	2
20 June '58	Rave On	5	14
29 Aug '58	Early In The Morning	17	4
16 Jan '59	Heartbeat	30	1
27 Feb '59	It Doesn't Matter Any More	1	21
24 April '59	Love's Made A Fool Of You	26	1
8 May '59	Love's Made A Fool Of You	30	1
11 Sept '59	Peggy Sue Got Married	13	10
15 Jan '60	When You Ask About Love	27	1
28 April '60	Heartbeat (re-issue)	30	3
12 May '60	More Than I Can Say	42	1
26 May '60	True Love Always	25	7
26 May '60	Baby My Heart	33	4
5 Oct '60	Buddy Holly Story	7	14
20 Oct '60	Learnin' Game	36	3
26 Jan '61	What To Do	34	6
6 July '61	Baby I Don't Care	12	14
21 Oct '61	That'll Be The Day	5	14
15 March '62	Listen To Me (re-issue)	48	1
21 June '62	Don't Ever Change	5	13
24 Jan '63	My Little Girl	17	9
14 March '63	Brown Eyed Handsome Man	3	17
6 June '63	Bo Diddley	4	12
6 June '63	Don't Try To Change Me	37	4
5 Sept '63	Wishing	10	11
19 Dec '63	What To Do	27	8
14 May '64	You've Got Love	4	6
2 July '64	(They call Her) La Bamba	21	10
10 Sept '64	Love's Made A Fool Of You	39	6
3 April '68	Peggy Sue/ Rave On	32	9
10 Dec '88	True Love Ways (re-issue)	65	4



A MULTI-AWARD WINNING SHOW...

AWARDS & NOMINATIONS



Laurence Olivier Awards ★

Best New Musical
Best Actor in a Musical

London 1991

Tony Awards ★

Best Actor in a Musical

New York 1991

Outer Circle Awards ★

Best New Musical
Best Performance in a Musical

New York 1991

Drama Desk Awards ★

Outstanding Actor in a Musical

New York 1991

Dora Mavor Moore Awards ★

Outstanding Production
Outstanding Musical Direction
Outstanding Performance
Outstanding Set Design
Outstanding Costume Design

Toronto 1991

Manchester Evening News ★

Best Actor in a Musical
Best Touring Musical

United Kingdom 1992

Helen Hayes Awards ★

Best Touring Production
Best Actor in a Touring Production
Best Actor in a Resident Musical

Washington D.C. 1993

2007

Australian Entertainment 'MO Awards ★

Best Theatrical Production

Australia 1993

Dalro Awards ★

Best Performance in a Foreign Production

South Africa 1994

Vita Awards ★

Best Musical Theatre Production
Best Performance in a Musical

South Africa 1994

Bay Area Critics Awards ★

Best Musical
Best Ensemble
Best Actor in a Musical

San Francisco 2004

What's On Stage Theatregoers' Choice Awards ★

Best Musical Revival

London 2008



PROUD SUPPORTERS OF THE ARTS.

Whether on a stage,
or in a glass.



HAAS®



CAPITOL
Friends

**BECOME
A FRIEND**

Join other patrons with
passion and experience the
theatre beyond the stage.



Contributors

We gratefully acknowledge the contributions from our donors that make all Capitol Theatre programs possible. This list represents donations received June 1, 2021 to September 15, 2022

Presidents' Club

(\$5,000 or more)

Janie & Clifford Plath Charitable Fund
Joe & Connie Farina
The Moen Family
Evelyn Paulsen
Paul & Terri Schaaake
The Smith Family Fund
Blaine & Preciosa Tamaki Foundation
Patricia Temple
Brig and Susie Temple

Directors' Club

(\$2,500 - \$4,999)

Bunker & Larry Frank
Betty Lewis
Bruce Lyman & Valerie Woerner
Debra & Craig McCown
Judge John & Mrs. Nancy Rossmeissl
Tony Sloan
Jerry & Dona Thompson

Producers' Club

(\$1,000 - \$2,499)

Anonymous
Alegria & Co PS
Connie & Jack Bloxom
Hal & Greta Bryan
Lloyd Crabtree & Elisabeth Kuhr
Bill Dezellell / Tieton Capital Management
Rick Fairbrook & Gay Scott
Jim Fitch
Harry & Jackie Helliesen
Jenny Hunter
Royal & Kay Keith
Linda Kerslake
Neal Lessenger
Peggy Lewis
Greg & Jan Luring
Stan & Pam Martinkus
The McDowell Family
Eula Miller
Brendan Monahan
Kelly Murray
Mike & Jennifer Norton
Charlie & Doris O'Connor
Jocelyn & Manuel Pedrosa

Rick & Mary Jo Pinnell
Kip & Lyndia Ramsey
Charlie Robin & Al Fischer
Julie & Soren Rottman
Chris & Susan Saunders
Sharon Sauve
Ken & Sharon Smith
Tree Top
George & Mavis Velikanje
Jim Watters
Gail Weaver
Mina Worthington

Sustainers

(\$500 - \$999)

Anonymous
Nancy Abbenhaus
Michael & Sherry Anderson
Rick & Linda Beck
Greg & Dottie Berndt
Tom Boyd & Becky Lang-Boyd
Judi Brown
Dana Dwinell
Charles Forster & Joan Jacobs
Rob Gallion
Pax Pater Charitable Fund
Mardi Hackett
William & Jean Halpin
Eric & JoAnne Hanses
Doyle Hardy & April Yates Hardy
Virginia Hislop
Dennis & Donna Hogenson
Greg Huefner & Lisa Wallace
Karen Hyatt
Addy Logsdon Consulting
Duane & Kirsten Monick
Peak Performance Sports & Spine
Bob Price
Jim & Barbara Riley
Susan Saunders
Christian & Janet Schlect
Becky & Larry Scholl
David & Dyanne Stepanek
Roger & Betty Strand
Martin & Priti Streich
Bette Taylor
Terry & Sharon Truhler

Patrons

(\$250 - \$499)

Anonymous
Bruce & Julie Allen
Ruth Ann Allen
Irel & Carla Allred
Jared & Cheyenne Ammerman
Gloria Anderson
Ben & Leanne Antonio
Susan Arb
Jim & Karin Avery
Mark & Debbi Baldwin
David Bauman
Phil & Marilyn Bird
Edward Birge
Terry & Jennifer Bliesner
Sheri & Mike Brockway
Betsy Broom
Lee Callarman
Barbara Campbell
Michael Chandler & Laura Terrazas
Linda Clark
Pam Cleaver
Mark and Lori Cleveland
Kathy Coffey
Dan Cole and CJ Koozer
John & Jane Cooper
Sheri-Lou Creson
Bruce Crockett
Todd and Laura Crooks
Sonja Dodge
Bill & Jan Drenguis
Sue Dunn
Betty L. Elder
Dana Eliason
Aaron Erickson
Kathy Erickson
Jill & Joe Falk
Norris & Alice Faringer
Carter & Linda Fjeld
Warren & Penny Fordyce
Priscilla & Steve Forney
John and Stephanie Funk
Ashley Gamache
Linda & John Gilmore
Lynn & Bill Gilmore
Karl & Mary Graf
Norma Haney

Stephanie Hansen
 Robert Harrison
 Roger & Susan Head
 Pam Henderson
 Jonathan Hibbs & Portia Jones
 Tom Hinman
 Ben Hittle
 Lisa & Paul Holyfield
 Kevin & Heather Hudson
 Chelsea Irwin
 Leslie & Jacob Johnson
 Nina Johnson
 Michelle Juette
 Fred & Amy Karau
 Catherine Kelly
 Matthew Kloster
 Tim & Leslie Knowles
 Renee Kollman
 Matthew LaCombe
 Richard Nicksis & Cheryl LaFlamme
 Mel & Sheila Leskinen
 Carol & Hamilton Licht
 Jeff & Teresa Louman
 Arlan Lund
 David and Lindsay Mack
 Kay Maletta
 The Mallonee Family
 Nancy & Russell Mazzola
 Jerry & Philene McDonald
 Kristin Mattie
 Judith Meloy
 Ray & Sandie Menard
 Jaclyn Midkiff
 Rich & Dee Ann Millet
 Sharon Miracle
 Matthew & Sarah Morgan
 Shannon & Phil Moyer
 Dave & Betty Jo Murray
 Penny and Russ Myers
 Joe Nieto
 Greg & Kathleen Paganelli
 Paul & Treasa Palmer
 Robert Powers
 Stanley S & Karen A Pratt
 Maryellen Reinhart
 Kimberly Ruck
 L.J. & Suzanne Schwaegler
 Brandy & Matthew Schwartz

Kenneth & Sylvia Severn
 Morris & Donna Shore
 Sally Simon
 Patrick & Colleen Smith
 LJ Da Corsi & Kimberly Starr
 Mary Stephenson
 Mike & Kay Stern
 Jeff & Lorita Stohr
 Tamera Schille Straub
 Siri Strom
 Marv Swainson
 Angela Sybouts
 Hilary Tanneberg
 Monica Taylor
 Marsha & Keith Therrien
 Calvin & Jeanne Thompson
 Paul & Karen Tompkins
 Casey Corr and Sally Tonkin
 Jeff & Diane Trammell
 Christy Bracewell Trotter
 Richard & Pat Twiss
 Mindy Udell
 Matt Uhlman
 Leah Van Dyke
 Robin Walker
 Carol & Larry West
 Susan Wooters
 Dave & Priscilla Wyckoff
 Yakima Town Hall
 Dustin and Kim Yeager

Curtain Raisers (\$100 - \$249)

Anonymous
 John Baule
 James & Anne Berg
 Barry Bernfeld
 Ed & Gail Boob
 Dr John & Karen Boucher
 Mr Courtney Brost
 Richard & Gail Brown
 Sarah Brown
 Effie Burton
 Bill & Ina Bush
 Michael & Cheryl Bush
 Margie Campbell
 Salie & Patrick Cockrill
 John & Patrice Cornelius

Chereé Dennison
 Delores & Ken Desserault
 Bill & Vicki Elkins
 Victor & Julia Epperly
 Kathleen Fletcher
 Victoria Flower
 Nate & Erin Fulton
 Steven and Randie Gottlieb
 Jeannie & Jim Grippin
 Joe & Ann Hall
 Valtino Hicks & Family
 Don & Mary-Jane Hovis
 Tom & Cathy Kehm
 Marianne & Corwin King
 Laural Klein
 Elise & Thom Kokenge
 Adrienne Landin-Simond
 David & Kathy LaRiviere
 Jeremy Loyd
 Janis Luvaas
 David Lynx
 Mike McCloskey
 Jerry & Linda Monroe
 Jim & Sherri Moon
 Kristin Morrison
 Matt & Joy Petersen
 Erwina Peterson
 Linda & Bryan Powell
 Keith & Sharon Qunell
 Brian & Tammy Regimbal
 Stewart Reif
 Maira Rodriuguz
 Ron & Diann Rockstrom
 Kevin & Nancy Roy
 Nick & Kathy Schultz
 Ken & Millie Stenehjem
 Dr. Angela Stewart
 Judi Stocker
 Kristy Tackett
 Ann Tritz
 Virgil & Selma Umbarger
 Doris Unruh
 Darla Van Corbach
 Robert & Leslie Wahl
 Patti Wallace
 Carol West
 Cindy Zimmerman

In honor of: **Vi Powers**

In memory of: **Julita Acevedo, Rick Brown, Sally F Fitch, Carol Hassen, Jeff Meyers, Don Moen, Joan Pinnell, Cliff Plath, Lillian M Robin, Walter Sauve, Karen Sloan, Monica Stannard.**



RED & CAROLYN RAMSEY



GAY DORSEY &
MIKE POPPOFF



The Capitol Theatre Committee wishes to honor our corporate underwriters for their community leadership and commitment to our Theatre and its role in the quality-of-life of our valley.
