



Technical Packet

Updated: September 1st 2022

Table of Contents

General Venue Information_____	3
Directions/Parking_____	4
Carpentry_____	5
Fly Rail Line Set Schedule_____	7
Production Center Ground Plan_____	9
Stage (with audio rig points indicated)_____	10
Electrics_____	11
Audio/Video_____	13
Wardrobe and Props_____	15
Labor_____	16
Nearby Hotels _____	17
Nearby Restaurants _____	18
Nearby Services _____	20
Medical/Dental Care _____	21

General Venue Information

Street Address:
Capitol Theatre
19 S 3rd Street
Yakima, WA 98901

Shipping Address:
Capitol Theatre Stage Door
14 S 4th Street
Yakima, WA 98901

Business Offices:
Capitol Theatre
PO Box 102
Yakima, WA 98907

Capitol Theatre Staff

CEO	Charlie Robin	(509) 853-8000	charlie@capitoltheatre.org
CFO	Carol West	(509) 853-8000	carol@capitoltheatre.org
Patron Services Manager	Cat McMillen	(509) 853-8000	cat@capitoltheatre.org
Technical Director	Brian Palandri	(509) 853-8324	brian@capitoltheatre.org
Graphic Design	Jed Gibbs		Jed@capitoltheatre.org
Box Office		(509) 853-2787	boxoffice@capitoltheatre.org
Business Office		(509) 853-8000	arts@capitoltheatre.org
Business Office Fax		(509) 575-6251	

Our History

Originally built in 1920, The Capitol Theatre has been serving the Yakima community for over a century. Just after being purchased by the City of Yakima in 1975, much of the Capitol burned to the ground in a tragic fire, leaving nothing but a smoldering facade. The newly formed nonprofit, Capitol Theatre Committee, led fundraising efforts to restore the Theatre to its original glory. It reopened in 1978 (just 733 days after the fire).

Today, the Capitol Theatre Committee programs, manages, and maintains the City owned Theatre facilities. Annually, the CTC presents and/or hosts an average of 175 events sponsored by 65 separate community and for-profit promoters.

Directions and Parking

Directions to the Capitol Theater Main Entrance

On I-82 Highway, take the Yakima Ave/Terrace Heights exit (Exit 33B when coming from the North, Exit 33 when coming from the South). Head west on Yakima Ave, towards the city center. In $\frac{3}{4}$ of a mile turn left (South) onto S 3rd Street. The Capitol Theatre is in the middle of the block on the left (East).

Directions to the Loading Dock and Stage Door

On I-82 Highway, take the Yakima Ave/Terrace Heights exit (Exit 33B when coming from the North, Exit 33 when coming from the South). Head west on Yakima Ave, towards the city center. In $\frac{3}{4}$ of a mile turn left (South) onto S 4th Street. The Capitol Theatre Loading Dock is in the middle of the block on the right (West).

On Site Parking

The 4th Street loading dock has parking available for:

- [2] Semi Trucks on the loading dock
- [2] Tour Busses on the South parking pad*
- [2] Tour Bus on the North parking pad**

*alternatively [2] Semi Trucks

**alternatively [2] Semi Trucks, or VIP parking for [6] cars

Shore Power

50a, 30a, 20a shore power is available on both the North and South parking pads.



Carpentry

Loading Dock

- [2] Truck bays
- Opening size: 10' wide x 10' tall
- Shelters, restraints, and leveler ramps for both bays
- [1] 1-ton Stacking motor located inside the Production Center between bay doors
- Loading docks are on the same level as the stage, with a straight run of 93' to the stage

Stage Dimensions

- Proscenium opening: 36'8"
- Proscenium height: 30'
- Stage Floor to Grid: 67'5"
- Stage depth (from plaster line to upstage wall): 37'6"
- Stage depth (from lip of apron to upstage wall): 51'
- Apron depth (from lip of apron to plaster line): 13'-8" @ center, 11' @ off stage edge
- Stage width wall to wall: 88'
- Stage Right wing space: 20' to 26'
- Stage Left wing space: 13' to 24' (orchestra shell obstructs wing)
- Stage Left and Right Fly Floor height: 26'-9"
- Stage Right lowest clearance height: 18'9"
- Stage Left lowest clearance height: 23'3"

Stage Floor

- Wood floor painted black
- Tours may lag screw into stage with permission

FOH Audio/Lighting Position Dimensions

- Located at the back of the main floor 58'9" from Lip of Apron, 72'-6" from plaster line
- 21'5" wide x 6'7" deep
- 150' cable run to either stage left or stage right
- Open to house
- Available Power: [26] 15amp 120v standard outlets

Personnel Lifts and Ladders

- [1] Genie lift with a 29'-6' max platform height
- [2] Self Propelled JLG lift with a 19'-6' max platform height
- [3] 8' A-frame ladders
- [2] 12' A-frame ladder
- [1] 24' extension ladder

Platforms and Risers

- [40] 4' x 8' risers – available with 8", 16", 24", or 32" legs
- [6] 3-step standing choral risers (with a 4th step option and back rails)
- [20] 3 or 6 tier seated choral risers

Orchestra Equipment

- [1] 6' 6" Steinway "L" Grand Piano (Gloss Black)
- [1] Baldwin Upright Piano (Brown)
- [100] Orchestra Chairs – Blue w/o arms
- [70] Music stands
- [50] Music stand lights

Podiums and Lecterns

- [1] Lectern
- [1] Conductor's Podium
- [1] USA Flag with gold trim
- [1] Washington State Flag

Fly Rail

- The Capitol Theatre has a Double Purchase Fly System
- Fly Rail is located above the stage on the Stage Right Fly Floor
- Battens are a mix of 1 ½" and 2" pipe. (See rail plot for specific line set info.)
- [49] Working line sets, [43] Available for Tour use.
- Low trim is 5' High trim is 66'
- Arbor capacity of 1500 lbs. (750 lbs. per batten)
- 16,000 lbs. of available weight (14,500 lbs. on Loading Bridge, 1,500 lbs. on Deck)

Stage Curtains

- | | | | |
|--------------------------|---------------------|--------------|----------------|
| • [5] Borders | Size: 50' w x 15' h | Color: Black | Fullness Flat |
| • [5] Sets of Legs | Size: 12' w x 30' h | Color: Black | Fullness: Flat |
| • [1] Mid Stage Traveler | Size: 60' w x 30' h | Color: Black | Fullness: 25% |
| • [2] Blackout Drop | Size: 30' w x 30' h | Color: Black | Fullness: 25% |
| • [1] Cyclorama (Muslin) | Size: 55' w x 30' h | Color: White | Fullness Flat |
| • [1] Black Scrim | Size: 55' w x 30' h | Color: Black | Fullness Flat |
| • [1] White Scrim | Size: 55' w x 30' h | Color: White | Fullness Flat |

Valance and Grand Drape

- Valance is deep red with golden tassels
- Grand Drape is deep red with golden tassels and has painted details on drape
- Grand Drape can either guillotine or travel open/closed

Capitol Theatre Line Set Schedule

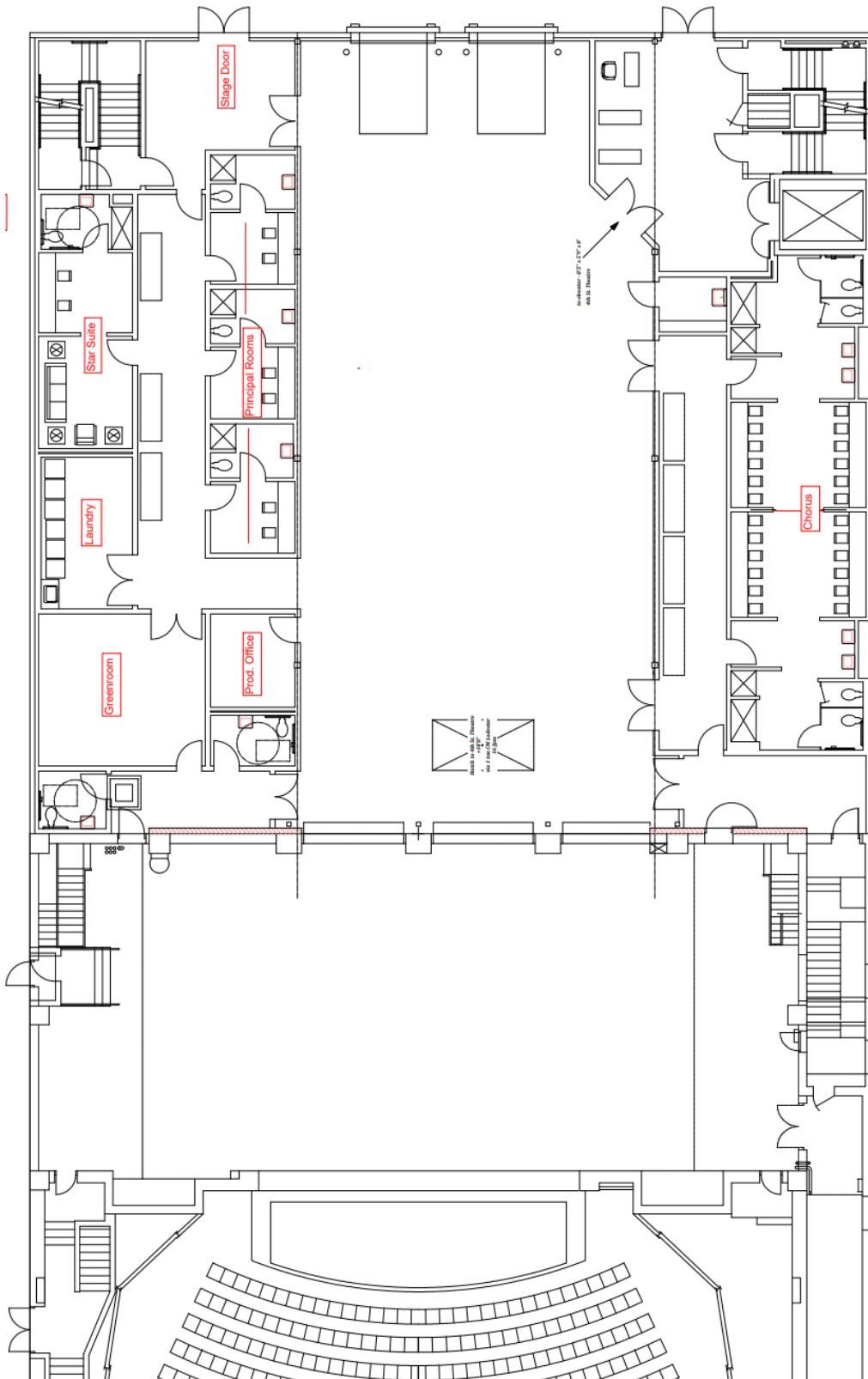
Orange Line Sets are 2" Diameter Pipe

White Line Sets are 1½" Diameter Pipe

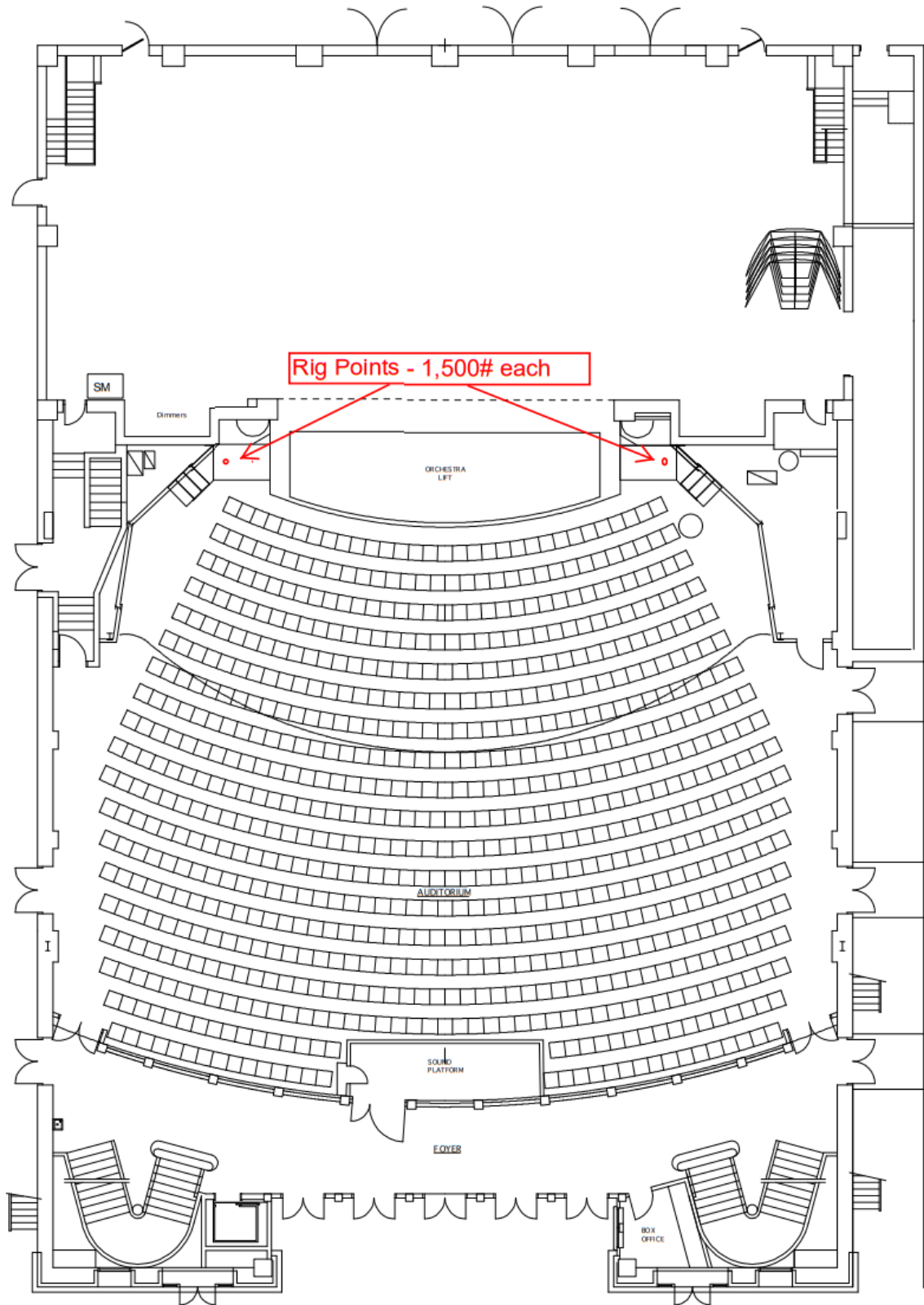
Line Set #	Distance to Plaster Line	House Hang	Arbor Weight	Notes
1	0'-9"	Valance	475 lbs	
2	1'-9"	Grand Drape	1,635 lbs	Guillotine or Traveler
3	2'-11"	Border #1	160 lbs	
4	3'-6"	Legs #1	160 lbs	
5	4'-2"	Electrics #1		
6	4'-11"			
7	5'-6"	Video Screen	105 lbs	
8	6'-2"			
9	6'-11"			
10	7'-4"			
11		Orchestra Shell Ceiling		Cannot Be Struck
12	8'-11"			
13	9'-6"			Short Baton
14	10'-3"	Border #2	160 lbs	
15	11'-0"	Legs #2	160 lbs	
16	11'-7"	Electrics #2		
17	12'-11"			
18	13'-7"			
19	14'-3"			
20		Orchestra Shell Ceiling		Cannot Be Struck
21	15'-7"			
22	16'-3"	Border #3	160 lbs	Short Baton
23		Mid-Stage Traveler	1,185 lbs	Guillotine or Traveler, Cannot Be Struck
24	17'-7"	Legs #3	160 lbs	
25	18'-2"	Electrics #3		
26	18'-11"			
27	19'-7"			
28	20'-3"			
29	21'-0"			
30	21'-8"			
31	22'-0"			
32		Orchestra Shell Ceiling		Cannot Be Struck
33	23'-7"			
34	24'-11"			
35	25'-6"	Border #4	160 lbs	Short Baton
36	26'-3"	Legs #4	160 lbs	
37	26'-11"	Electrics #4		

38	27'-6"			
39	28'-0"			Super Short Baton
40	28'-11"			Super Short Baton
41	29'-5"	Electrics #5 (cyc)		Underslung 1½" Pipe, Super Short Baton
42	30'-2"			Super Short Baton
43	31'-0"			
44	31'-6"			
45		Projector		Underslung 1½" Pipe, Bent Baton Pipe
46	32'-11"			
47	33'-7"			Bent Baton Pipe
48	34'-2"	Cyclorama	120 lbs	
49	35'-0"	Full Stage Black Out	800 lbs	
50	--			UNUSEABLE (No baton attached to line set)

Production Center Ground Plan



Capitol Theatre Stage (Audio Stack Rig Points)



Electrics

Shows Requiring Power Hook-Ups

Washington State requires a permit for temporary power hook-ups. Hook-up, installation, and removal must be performed by a state certified electrician. The Capitol Theatre Technical Director will arrange for the permit and electrician. The associated costs will be passed on to the renter without mark up.

Temporary power hook-ups at the Capitol Theatre must be done in accordance with National Electrical Code standards as well as City of Yakima and Washington Administrative Code (WAC) rules and regulations. Please refer to the appropriate authority having jurisdiction if there are questions.

Tour Power

Stage Right: Electrics

- [2] 400 amp - 208 volt - 3Ø – 5 wire – AC
- [1] 100 amp - 208 volt - 3Ø – 5 wire – AC
- [1] 60 amp - 208 volt - 3Ø – 5 wire – AC
- [1] 30 amp - 208 volt - 3Ø – 5 wire – AC

Stage Left: Audio

- [1] 100 - 200 amp – 208 volt – 3Ø - 5 wire – AC

Loading Dock: Optional

- [1] 400 amp - 208 volt - 3Ø – 5 wire – AC

Lighting Dimmers

- [192] 2.4Kw – Located above stage on the Stage Left Fly Floor

Control Console

- [1] Strand Palette VL 96

FOH Lighting Positions

Cove

- Throw distance: 73' to center of plaster line
- Physical limitation for fixture mounting ~20 fixture limit

Stage Left and Right Box Booms

- Throw distance: 45'-6" to center of plaster line
- Limited coverage of stage due to extreme angle

The Capitol Theatre **DOES NOT HAVE** a Balcony Rail

Follow Spots

- Enclosed Spot Booth located at rear of balcony. 11'w x 10'-6"d
- Main access is through audience; additional access via trapdoor and ladder from catwalk

- Throw Distance: 99' to center of plaster line
- [3] Lycian Super Star model 1275 – 1200 watt

Available Power In Spot Booth:

- [1] 30 amp 250v outlet
- [3] 20 amp 125v outlets (for spotlights)
- [4] 15 amp 120v standard outlets

Lighting Inventory

- [80] ETC Source 4 with 575w lamps. Can use any combination of the following barrels:
 - [12] 10°
 - [12] 14°
 - [22] 19°
 - [10] 26°
 - [40] 36°
- [16] 26°ETC Source 4 Jr. with 575w lamps
- [40] ETC PAR (Very-Narrow thru Extra-Wide lenses available) with 575w lamps
- [30] ETC ParNel with 575w lamps
- [8] Colortran 3 cell cyc lights with 1000w lamps

Audio and Video

Sound Pressure Levels

CTC shall not allow the sound pressure levels of either the house sound system or any supplemental equipment to exceed 85dBA for a sustained period of longer than 10 seconds as measured on a CTC supplied sound level meter. Sound levels are measured at center orchestra, center lower balcony, and/or the road mixing position located at the rear center orchestra. ARTIST'S on-stage musical instrument amplifiers and/or on-stage monitor systems will not exceed 85dBA for a sustained period of longer than 10 seconds measured at the on-stage mixing console position. ARTIST'S technicians, employees and other personnel shall cooperate fully on this matter.

Control Console

- [1] Digidesign Venue SC-48

Speakers

- [1] d&b Audiotechnik T-10 curvilinear array (8 units)—Center Cluster
- [2] d&b Audiotechnik Q-10 L&R Orch Side Fills
- [4] d&b Audiotechnik E-8 under Balcony Fills
- [2] d&b Audiotechnik E-0 under Balcony Fills
- [4] d&b Audiotechnik E-0 front Apron Fills
- [2] d&b Audiotechnik Q-7 L&R Balcony Side Fills

Subs

- [2] d&b Audiotechnik T Sub (1 Left – 1 Right)

Monitors

- [8] EAW MW12
- [5] Mackie Actives SRM450

Intercom

- [1] Clear-Com Encore MS-702 Main Station
- [11] Clear-Com RS-701 Belt Packs
- [12] Clear-Com CC-300 Headsets
- [1] RadioCom BTR-300 Wireless Main Station
- [4] RadioCom TR-300 Wireless Belt Packs

Microphones

- [3] SM56 (with drum mounts)
- [10] SM57
- [17] SM58
- [2] SM59
- [1] SM 52

- [3] SM 81
- [4] KSM 137
- [4] AKG C414 B-ULS
- [6] PCC-160
- [2] PZM-6D
- [5] CM-31Mini Condenser Hanging Mic
- [6] SM 58 UR2 Wireless
- [10] UR1 Wireless Beltpack
- [7] SM 93 Lav mic
- [11] WL185 Lav mic
- [18] Isomax E6 countryman

Video Equipment

[1] Projection Screen (4th Street Theatre)

- 10'H x 14'W
- Rear or Front projection
- Screen has free standing legs or can be flown

[1] Projection Screen (Capitol Theatre)

- 10'H x 17'W
- Rear or Front projection
- Screen has free standing legs or can be flown

[2] Projector

- Hitachi CP-EX 5011WN, 5200 lumens, 1080p 1024x768

Wardrobe and Props

Internet

Wi-Fi access is available in all areas of the theatre. Touring personnel will receive the Wi-Fi password upon arrival. Hardline internet is available in limited locations upon request.

Dressing Rooms

Located on stage level

- [1] 2 person Star Suite with attached private Green Room and ensuite shower and toilet
- [3] 3-4 person Principal Dressing Rooms with ensuite shower and toilet
- [2] 12 person Chorus Dressing Room with showers and toilets

Located below stage level (stage access by stairway)

- [2] 1-2 person Dressing Rooms with ensuite shower and toilet
- [2] 1-2 person Dressing Rooms
- [1] 8-10 person Dressing Room

Green Rooms and Restrooms

- [1] Green Room located on stage level (Adjacent to SR stage access)
- [1] "Green Room Area" below stage level in cross under hallway (Adjacent to Pit entry)
- [2] Single person Restrooms located on stage level (toilet and sink)
- [1] Male crew bathroom below stage level (toilets and shower)
- [1] Female crew bathroom below stage level (toilets and shower)

Laundry

- [2] Maytag Front Loading Washers (model: MAM 22 PRB WWO)
- [1] Maytag Top Loading Washer (model: MVW623)
- [3] May Tag Front Loading Dryers (model: MDG17MNAWW1)
- [3] Steamers
- [3] Irons & Boards

Labor

Technical Crew Requirements

Technical Crew are called on a per-show basis depending on the requirements of the event. The minimum standard crew required for any event is listed below:

- [1] Stage Manager
- [1] Electrician
- [1] Audio
- [2] Carpenters (or [1] Carpenter and [1] Flyman)
- [1] Door

Additional Technical Crew may be required depending on event requirements. All Technical Crew requirements are specified and approved by the Capitol Theatre Technical Director.

Call Times and Overtime

The minimum crew call is [4] hours. For any work calls shorter than [4] hours, renter will be billed for a full [4] hours of labor regardless of actual time worked.

Technical Crew receive time-and-a-half pay for any hours worked over [40] hours in [1] week. A week is considered all of the consecutive days between Saturday and Friday.

Breaks

The CTC abides by all L & I requirements for worker breaks and meals as required by the State of Washington. At a minimum, CTC crews are required to have a [60] minute walk-away meal break for every [5] hours worked. In the case that the schedule provided by the LICENSEE does not allow for adequate worker breaks, CTC will add additional workers to the call in order to provide full worker coverage during the rental period at LICENSEE's expense.

Front of House Staff Requirements

Front of House Staff are called on a per-show basis depending on the requirements of the event. The minimum front of house crew is:

- [1] House Manager
- [1] Asst. House Manager
- [11] Ushers

For events in which only the Orchestra seating section is used, the minimum call is reduced to:

- [1] House Manager
- [1] Asst. House Manager
- [7] Ushers

Additional Front of House Staff may be required depending on event requirements. All Front of House Staff requirements are specified and approved by the Capitol Theatre Patron Services Manager.

Nearby Hotels

Hilton Garden Inn (1 block)

401 E Yakima Ave
Yakima WA 98901
509-454-1111

The Hotel Maison (1 block)

321 E Yakima Ave
Yakima WA 98901
509-571-1900

Red Lion Hotel Yakima Center (3 blocks)

607 E Yakima Ave
Yakima WA 98901
509-248-5900

Holiday Inn (4 blocks)

802 E Yakima Ave
Yakima WA 98901
509-494-7000

Fairfield Inn & Suites by Marriott

(1.5 miles)
137 N Fair Ave
Yakima WA 98901
509-452-3100

Ledgestone Hotel (1.5 miles)

107 N Fair Ave
Yakima WA 98901
509-453-3151

Oxford Suites (1.5 miles)

1701 E Yakima Ave
Yakima WA 98901
509-457-9000

Best Western Plus Yakima Hotel (3 miles)

1614 N 1st St.
Yakima WA 98901
509-453-8898

Home2 Suites by Hilton (3.1 miles)

2420 W Nob Hill Blvd
Yakima WA 98902
509-453-1806

Best Western Plus Ahtanum Inn (3.4 miles)

2408 Rudkin Rd
Yakima WA 98903
509-248-9700

Holiday Inn Express & Suites (3.8 miles)

1215 Ahtanum Ridge Road
Union Gap WA 98903
509-902-8000

Nearby Restaurants

Coffee

Dutch Brothers
305 N 1st St
541-955-4700

Essencia Artisan Bakery
4 N 3rd St
509-575-5570

North Town Coffee
32 N Front St
509-895-7600

Starbucks
602 E Yakima Ave
509-242-8996

Delivery Downtown

Jimmy Johns
122 E Yakima Ave
509-469-9110

Domino's Pizza
6 Union St
509-248-1000

Pizza Hut
6 N Fair Ave, #115
509-453-9999

Fast Food Downtown

Dairy Queen
801 E Yakima Ave
509-248-2571

Sub Shop of Yakima
20 N 2nd St
509-853-2691

Taco Bell
716 E Yakima Ave
509-453-3930

McDonald's
19 E Yakima Ave
509-452-8840

Downtown Restaurants

Casa Vittore Cafe
212 E Yakima Ave
509-452-8329

Cowiche Canyon Kitchen &
Ice House
202 E Yakima Ave
509-457-2007

Norm's of Yakima
5 N Front St
509-902-1505

Golden Wheel
9 S 1st St
509-457-8400

EZ Tiger
222 E Chestnut
509-571-1977

Olive Garden
222 E Yakima Ave
509-457-0485

Sumo
111 E Yakima Ave
509-426-2000

Second Street Grill
28 N 2nd St
509-469-1486

Thai House
14 N 2nd St
509-469-8986

Yakima Sports Center
Restaurant & Bar
214 E Yakima Ave
509-453-4647

Main Stop on the Ave
32 North Front St
509-571-1533

Purrr
306 E Yakima Ave
509-367-6680

Tea Garden
110 S 4th St
509-248-5565

Yakima Steak Company
221 W Yakima Ave
509-571-1472

Crafted
22 N 1st St
509-426-2220

West Side Pizza
602 E Yakima Ave
509-902-1136

Further Out

Applebee's Bar and Grill
1505 E Washington Ave
509-469-2114

Mel's Diner
314 N 1st St
509-248-5382

Pho King Crab
1601 E Washington Ave
509-453-4044

Bob's Burger & Brew
121 N Fair Ave
509-895-7199

Miner's Drive-In
2415 S 1st St
509-457-8194

Panera Bread
21 E Valley Mall Blvd
509-426-6090

Buffalo Wild Wings
2529 Main St
509-453-1215

New York Teriyaki
822 N 1st St
509-453-7500

Waffles Caffe
1510 N 1st St
509-574-0920

El Mirador
1601 E Yakima Ave
509-452-1202

Outback Steakhouse
2412 Rudkin Rd
509-596-0467

Famous Dave's Bar-B-Que
1504 E Washington Ave
509-469-7427

Ozeki (Japanese)
1527 Summitview Ave
509-834-4282

Nearby Services

Yakima Dry Cleaners
5715 Summitview
509-965-0960

Silverheels
16 N 2nd St
509-453-0958

Yakima Valley Cab
901 Summitview
509-480-8110

Walgreens Pharmacy
610 W Yakima Ave
509-469-0246

Gear Jammer Truck Plaza
2310 Rudkin Rd
509-248-9640

Planet Fitness
102 N Fair Ave
509-469-0477

High-Steppe Climbing Center
1015 E Lincoln Ave
509-225-9011

Medical/Dental Care

Emergencies _____ ***Call 911***

Hospitals

Yakima Valley Memorial
Hospital
Virginia Mason Memorial
2811 Tieton Dr Yakima
WA 98902
509-575-8100

Urgent Care

Yakima Valley Urgent Care
17 E Valley Mall Blvd #2B
Union Gap WA 98903
509-367-8733

Healthy Now: Creekside
3909 Creekside Loop
Yakima WA 98902
509-225-4669

Pharmacies

Walgreens
610 W Yakima Ave
Yakima WA 98902
509-469-0246

Rite Aid Pharmacy
12 N 9th Ave
Yakima WA 98902
509-452-2600

Ophthalmology

William Forrest
3902 Creekside Loop
Yakima WA 98902
509-452-4565

Selah Vision Clinic
1 Jim Clements Way
Selah WA 98942
509-697-2020

Physical Therapy

Cascade Summit Physical
Therapy
1608 S 24th Ave
Yakima WA 98902
509-248-6113

Peak Performance Sports &
Spine
2505 Racquet Ln
Yakima WA 98901
509-453-7325

Massage Therapy

Spa Pureza
118 S 11th Ave
Yakima WA 98902
509-759-2101

Ummelina Day Spa
399 E Yakima Ave
Yakima WA 98901
509-225-4772

Dentists

David A. Clark Family
Dentistry
4209 Tieton Dr, #102
Yakima WA 98908
509-966-2230

Steve Hemenway
719 N 39th Ave, #100
Yakima WA 98902
509-453-3610

Orthopedic

Orthopedics Northwest
1211 N 16th Ave
Yakima WA 98902
509-248-7184

Astria Health Center-
Orthopedics
111 S 11th Ave Suite 320
Yakima WA 98902
509-454-6330